



## 2/4 Macleay Street Potts Point, NSW

2 bed | 1 bath

Beautifully presented and brimming with character, this renovated Art Deco apartment offers a tranquil retreat in the heart of Potts Point's most desirable pocket. Set within the landmark Four Macleay building (c1938), this light-filled sanctuary captures a leafy outlook with charming harbour cameos, combining timeless elegance with modern convenience.

### Features:

? North-east facing position with leafy harbour cameos

Outgoings (approx)...

# R&W

[rwebay.com.au/8524840](http://rwebay.com.au/8524840)

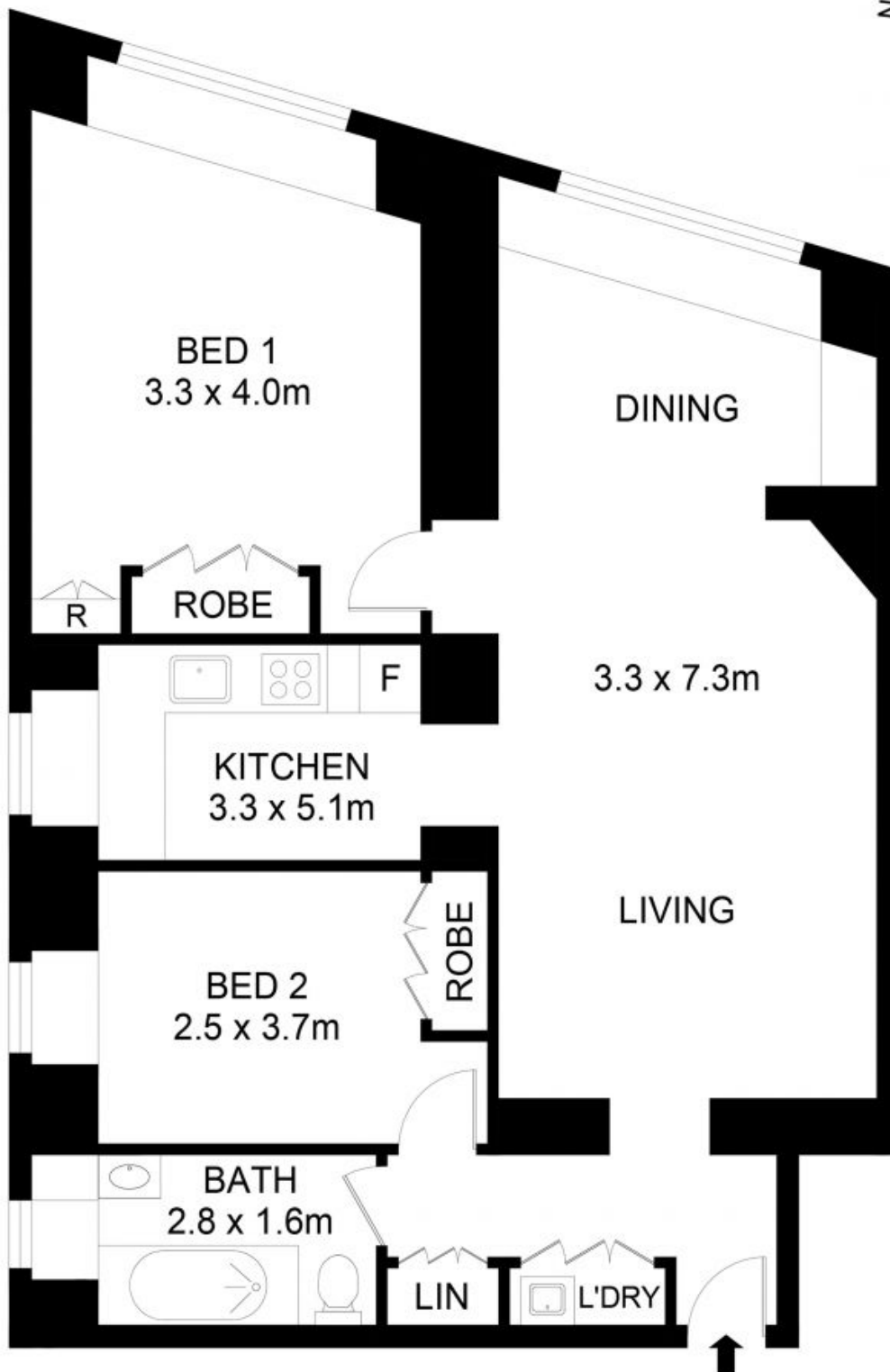
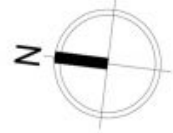
Greg McKinley 0412 044 822

Andrew Hoggett 0412 208 614

Penny Timothy 0418 546 500

**Proudly Richardson&Wrench**

Richardson & Wrench Elizabeth Bay / Potts Point  
02 8356 2700



## 2/4 Macleay Street, Potts Point

### Disclaimer

Floor Plan measurements are approximate and are for illustrative purposes only. While we cannot doubt the floor plans accuracy, we make no guarantee, warranty or representation as to the accuracy and completeness of the floor plan.