

VIRTUAL FURNITURE



VIRTUAL FURNITURE



82A/100 Elizabeth Bay Road Elizabeth Bay, NSW

| 1 bath | 1 car

R&W

Perfectly positioned on the top floor facing due North, in Harry Seidler's celebrated modernist building, this beautifully presented studio apartment offers an enviable city base in one of Sydney's most desirable Elizabeth Bay precincts on the loop of Elizabeth Bay Road. Compact yet cleverly designed, an ideal first home, investment property, weekday city pad or lock-up-and-leave for regional owners who visit Sydney regularly.

Key Features

☑ Neatly appointed bathroom with modern finishes and in...

rwebay.com.au/8529235

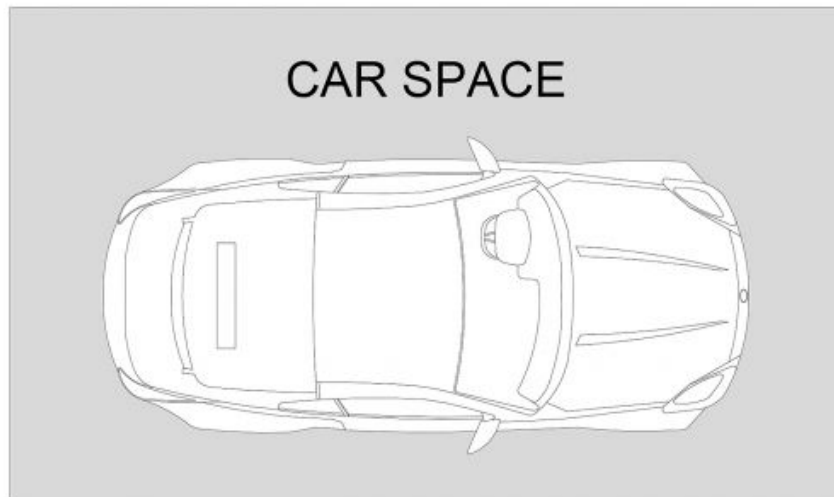
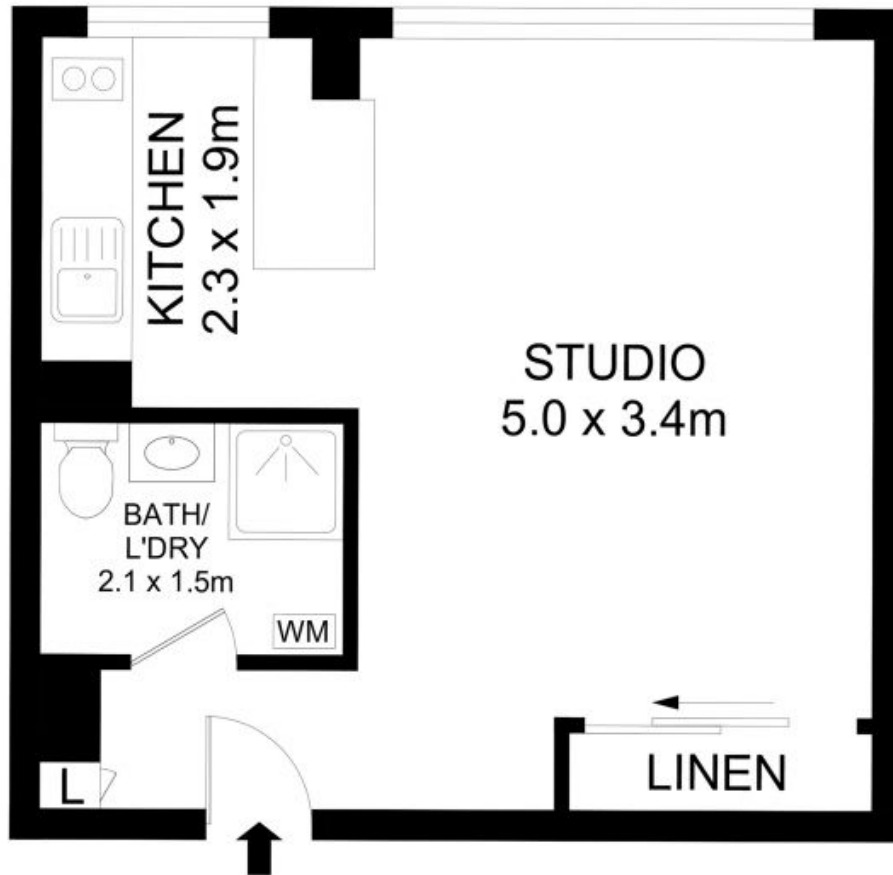
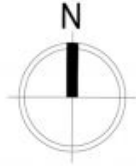
Penny Timothy 0418 546 500

Luke McDonnell 0418 844 110

Luke McDonnell 0418 844 110

Proudly Richardson&Wrench

Richardson & Wrench Elizabeth Bay / Potts Point
02 8356 2700



A82/100 Elizabeth Bay Road, Elizabeth Bay

Disclaimer

Floor Plan measurements are approximate and are for illustrative purposes only. While we cannot doubt the floor plans accuracy, we make no guarantee, warranty or representation as to the accuracy and completeness of the floor plan.

Every precaution has been taken to establish accuracy of the information in this brochure but does not constitute any representation by the vendor or agent.

