

34/3 Wylde Street Potts Point, NSW

2 bed | 1 bath

Capturing an east-facing aspect with sweeping views across the leafy district to the sparkling blue harbour and Heads, this updated apartment embodies effortless modern living in an unbeatable location. Positioned in the front wing of 'The Gateway', a well-regarded c.1950s security building, it offers both privacy and tranquillity above a vibrant harbourside enclave.

Bathed in morning light, the open plan living and dinin...

R&W

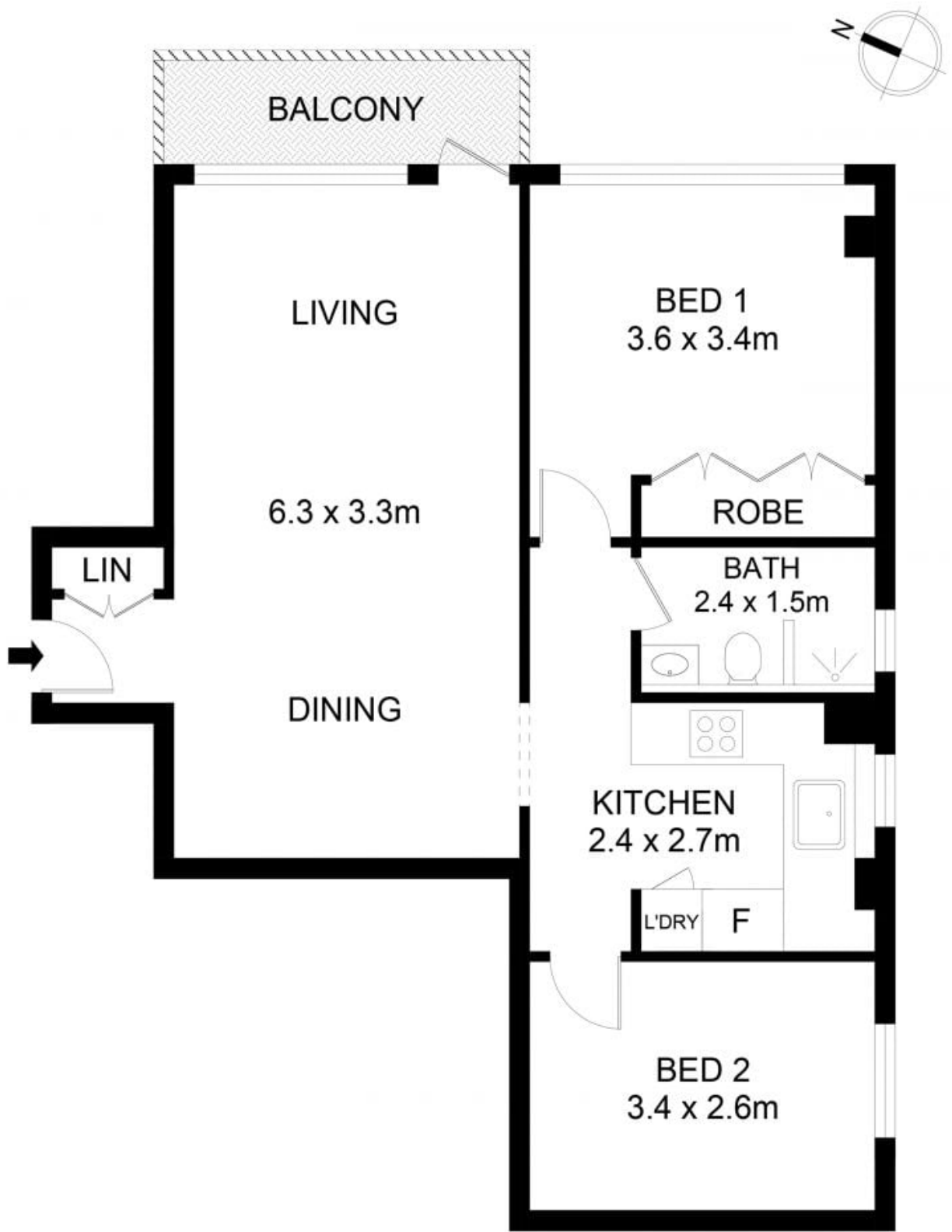
rwebay.com.au/8539453

Angelo Bouras 0401 658 653

Alex Mulholland 0410421182

Proudly Richardson&Wrench

Richardson & Wrench Elizabeth Bay / Potts Point
02 8356 2700



34/3 Wylde Street, Potts Point

Disclaimer

Floor Plan measurements are approximate and are for illustrative purposes only. While we cannot doubt the floor plans accuracy, we make no guarantee, warranty or representation as to the accuracy and completeness of the floor plan.