



202/117d Macleay Street Potts Point, NSW

1 bed | 1 bath

R&W

This impressively updated one-bedroom apartment in the heart of Potts Point offers a serene and stylish living space just 2km from Sydney's CBD. Situated front & center of the iconic 'The Gordon' building, this private 2nd-floor apartment featuring classy finishes throughout, providing the perfect blend of comfort and convenience.

Key Features:

Spacious Strata Title one bedroom + study
Jarrah hardwood floors, Internal laundry, Built-in robe,

Building & Location:...

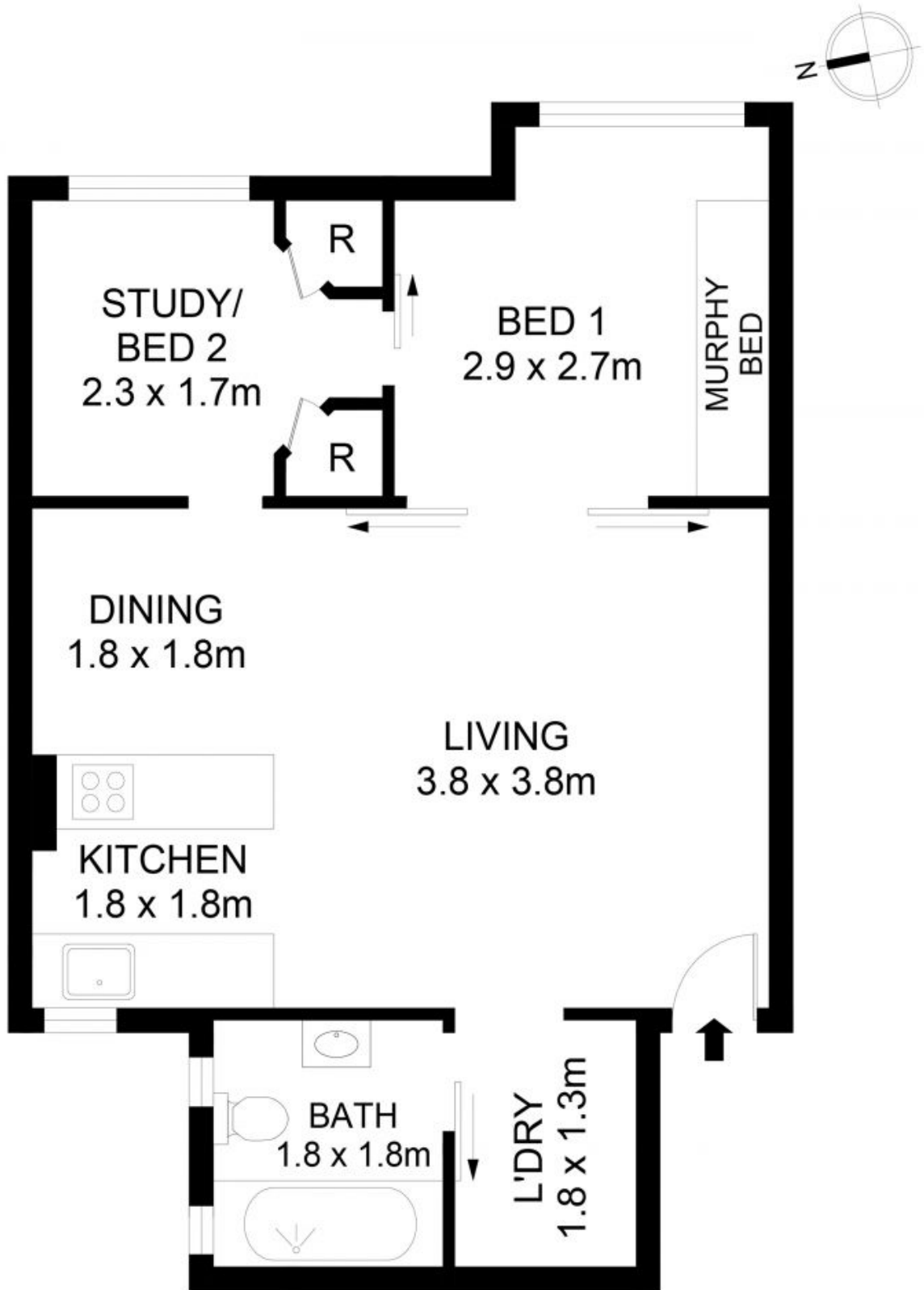
rwebay.com.au/8542647

Luke McDonnell 0418 844 110

Penny Timothy 0418 546 500

Proudly Richardson&Wrench

Richardson & Wrench Elizabeth Bay / Potts Point
02 8356 2700



202/117D Macleay Street, Potts Point

Disclaimer

Floor Plan measurements are approximate and are for illustrative purposes only. While we cannot doubt the floor plans accuracy, we make no guarantee, warranty or representation as to the accuracy and completeness of the floor plan.