



64/50 Roslyn Gardens Elizabeth Bay, NSW

1 bed | 1 bath | 1 car

R&W

Introducing an exceptional one-bedroom residence in Elizabeth Bay's landmark 'Aquarius' building. Within a Harry Seidler building, this beautifully updated split-level apartment captures a sun-filled north-east aspect and an elevated position with sweeping outlooks across Rushcutters Bay Park and the harbour. With seamless indoor/outdoor flow and a private corner setting, this is a rare offering in a highly regarded building.

Features

Approx Outgoings:...

rwebay.com.au/8556628

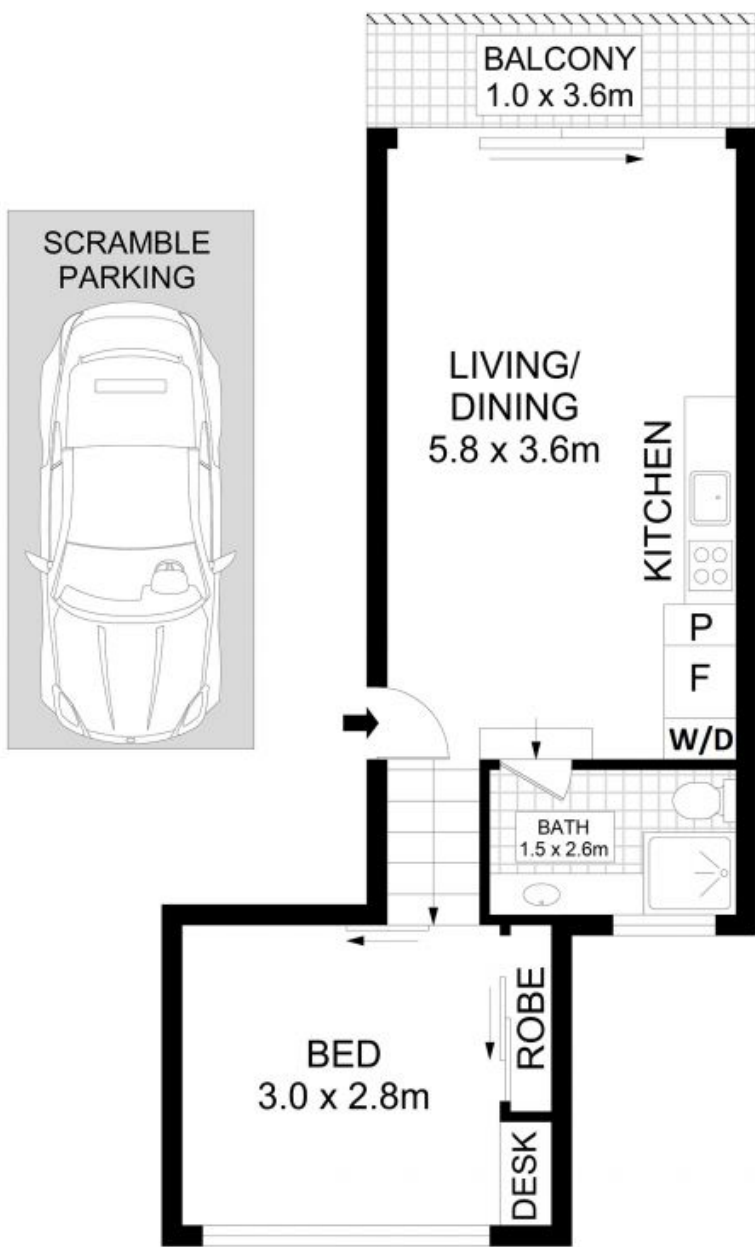
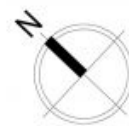
Angelo Bouras 0401 658 653

Alex Mulholland 0410421182

Greg McKinley 0412 044 822

Proudly Richardson&Wrench

Richardson & Wrench Elizabeth Bay / Potts Point
02 8356 2700



64/50 Roslyn Gardens, Elizabeth Bay

Disclaimer
Floor Plan measurements are approximate and are for illustrative purposes only. While we cannot doubt the floor plans accuracy, we make no guarantee, warranty or representation as to the accuracy and completeness of the floor plan

Every precaution has been taken to establish accuracy of the information in this brochure but does not constitute any representation by the vendor or agent.

