



51/60-70 William Street Woolloomooloo, NSW

1 bed | 1 bath

Privately positioned at the rear of the building, this beautifully presented one-bedroom apartment captures abundant natural light and district views from its desirable north-facing aspect. Designed for effortless living, it features a contemporary finish, a well-considered layout, and access to exceptional rooftop facilities. With the added convenience of car space options available for lease within the building, this home is ideal for first-home buyers, investors, or those seeking a low-maintenance city base.

- Walk everywhere location to the CBD, Kings Cross Stat...

R&W

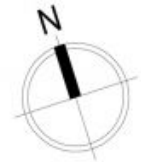
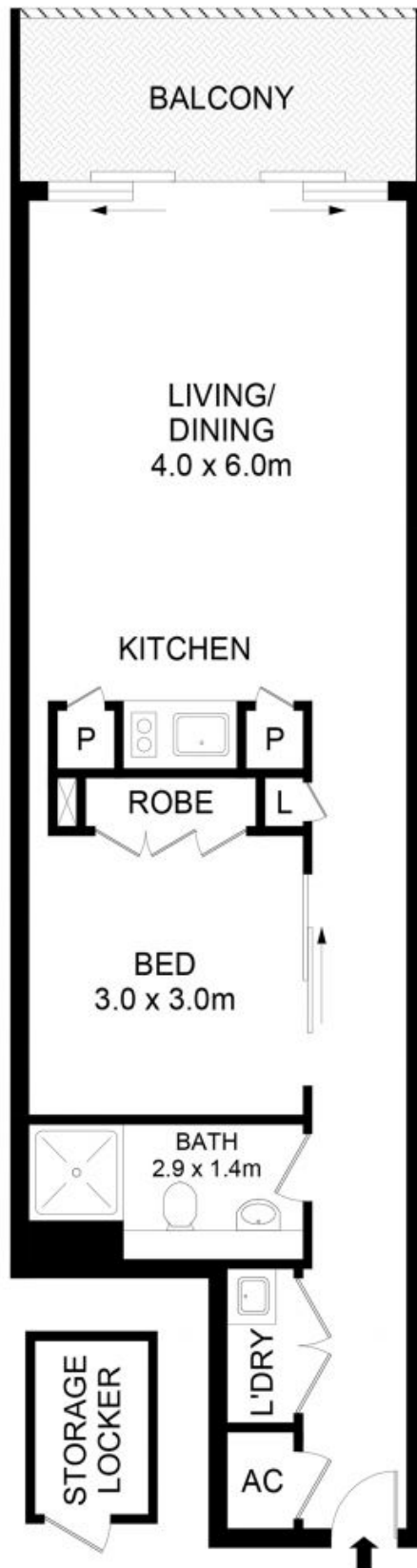
rwebay.com.au/8557841

Angelo Bouras 0401 658 653

Alex Mulholland 0410421182

Proudly Richardson&Wrench

Richardson & Wrench Elizabeth Bay / Potts Point
02 8356 2700



51/60-70 William Street, Woolloomooloo

Disclaimer

Floor Plan measurements are approximate and are for illustrative purposes only. While we cannot doubt the floor plans accuracy, we make no guarantee, warranty or representation as to the accuracy and completeness of the floor plan.