



## 131A Victoria Street Potts Point, NSW

1 bed | 1 bath

Occupying the lower ground floor of a row of Victorian Gothic-style terraces dating to the late 1800s, this oversized architect-designed apartment combines historic charm with contemporary ease. Originally designed by owner-architect Thomas Rowe (who also designed Sydney Hospital), this iconic residence was once part of the Orwell Estate. The heritage significance of the strata plan's buildings was later preserved by the famous Green Bans of the 1970s, instigated by Jack Munday and Juanita Nielsen.

Reimagined by the multi-award-winning Brad Swartz Archi...

# R&W

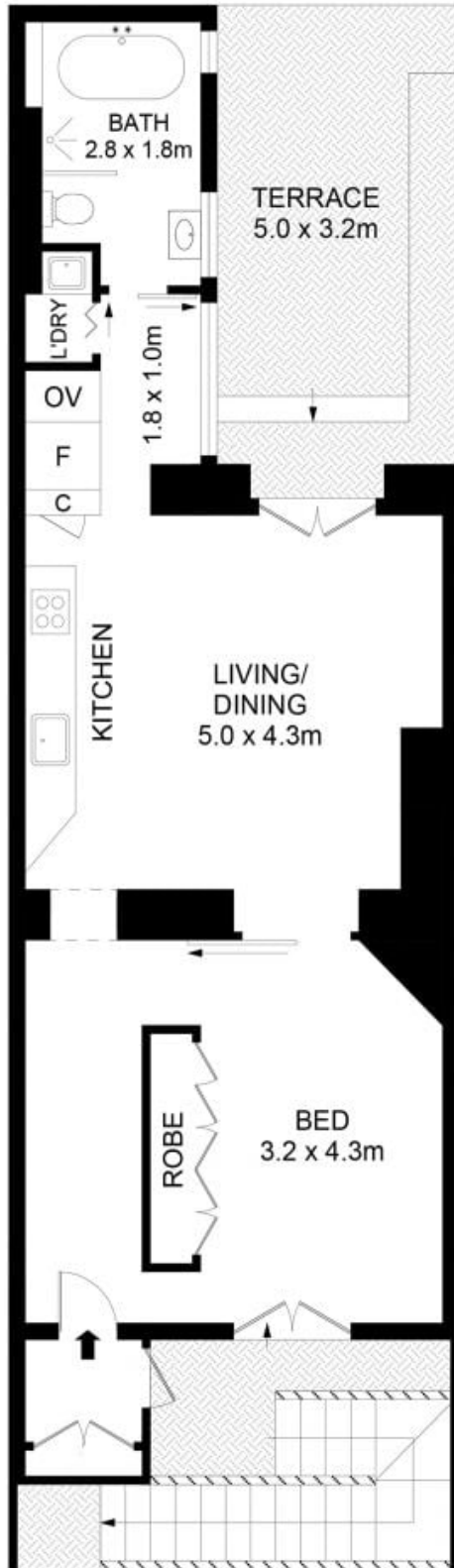
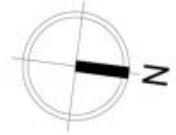
[rwebay.com.au/8598180](https://www.rwebay.com.au/8598180)

Luke McDonnell 0418 844 110

Penny Timothy 0418 546 500

**Proudly Richardson&Wrench**

Richardson & Wrench Elizabeth Bay / Potts Point  
02 8356 2700



## 131A Victoria Street, Potts Point

### Disclaimer

Floor Plan measurements are approximate and are for illustrative purposes only. While we cannot doubt the floor plans accuracy, we make no guarantee, warranty or representation as to the accuracy and completeness of the floor plan.