

5 McDonald Street Potts Point, NSW

5 bed | 3 bath | 2 car

An absolute premium residence, this magnificent Victorian terrace has been meticulously renovated to exacting standards, presenting as an opulent as-new residence for the most discerning buyer. Blending its innate c1880s pedigree with a high-end contemporary revamp, the home unfolds across 4 impressive levels, with vast living spaces, luxurious bathrooms, exceptional bedrooms, and the rare inclusion of private outdoor entertaining area plus off-street parking for 2 cars via rear lane access.

Standing as one of the finest homes in an exclusive set...

R&W

rwebay.com.au/8598893

Jason Boon 0418 671 494

Geoff Cox 0418 231 004

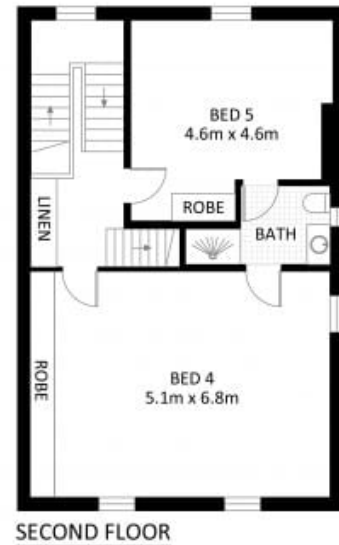
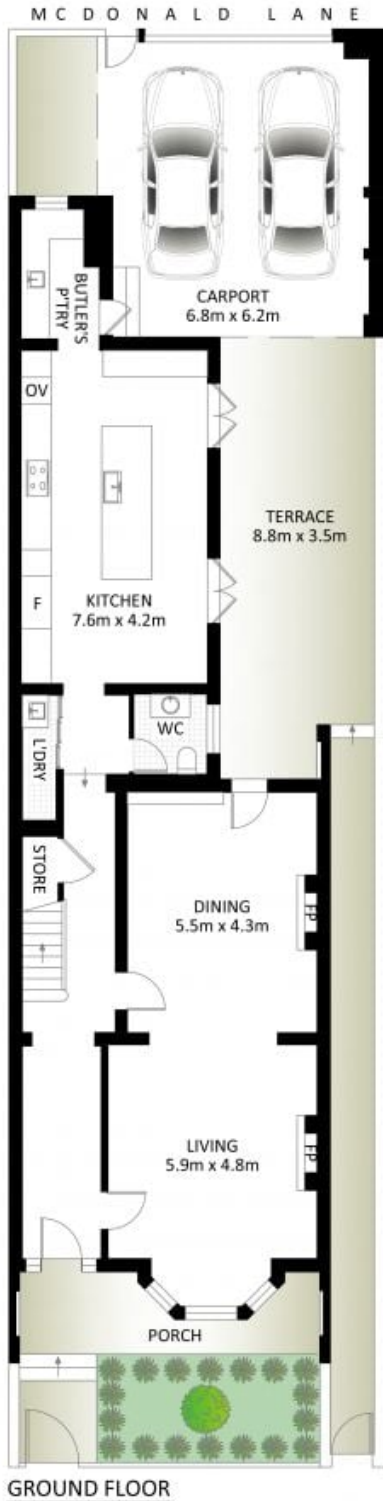
Joss Reid 0414 662 391

Proudly Richardson&Wrench

Richardson & Wrench Elizabeth Bay / Potts Point
02 8356 2700



Elizabeth Bay / Potts Point
8356 2700



5 McDonald Street, Potts Point



*PLANS SHOWN ONLY INDICATIVE OF LAYOUT. DIMENSIONS ARE APPROXIMATE.

Measurements are approximate and not to scale. The vendor, agency and supplier will accept no liability for its accuracy. Interested parties are advised to make their own independent enquiries.

Every precaution has been taken to establish accuracy of the information in this brochure but does not constitute any representation by the vendor or agent.

