



1/1 Grantham Street Potts Point, NSW

3 bed | 2 bath | 2 car

A remarkable harbourside residence of rare scale and luxury, this exceptional house-like home delivers a level of space and outlook of approximately 600m², seldom found so close to the city. One of just 8 residences within the exclusive "Grantham", it features stunning sun-blessed living areas which open to an extraordinary wraparound terrace garden plus private 20m lap pool, framed by views across Woolloomooloo taking in the Harbour Bridge, Opera House, and CBD skyline, with parking for 2 cars.

Designed by multi award-winning architect Alex Popov wi...

R&W

rwebay.com.au/8604183

Jason Boon 0418 671 494

Geoff Cox 0418 231 004

Joss Reid 0414 662 391

Proudly Richardson&Wrench

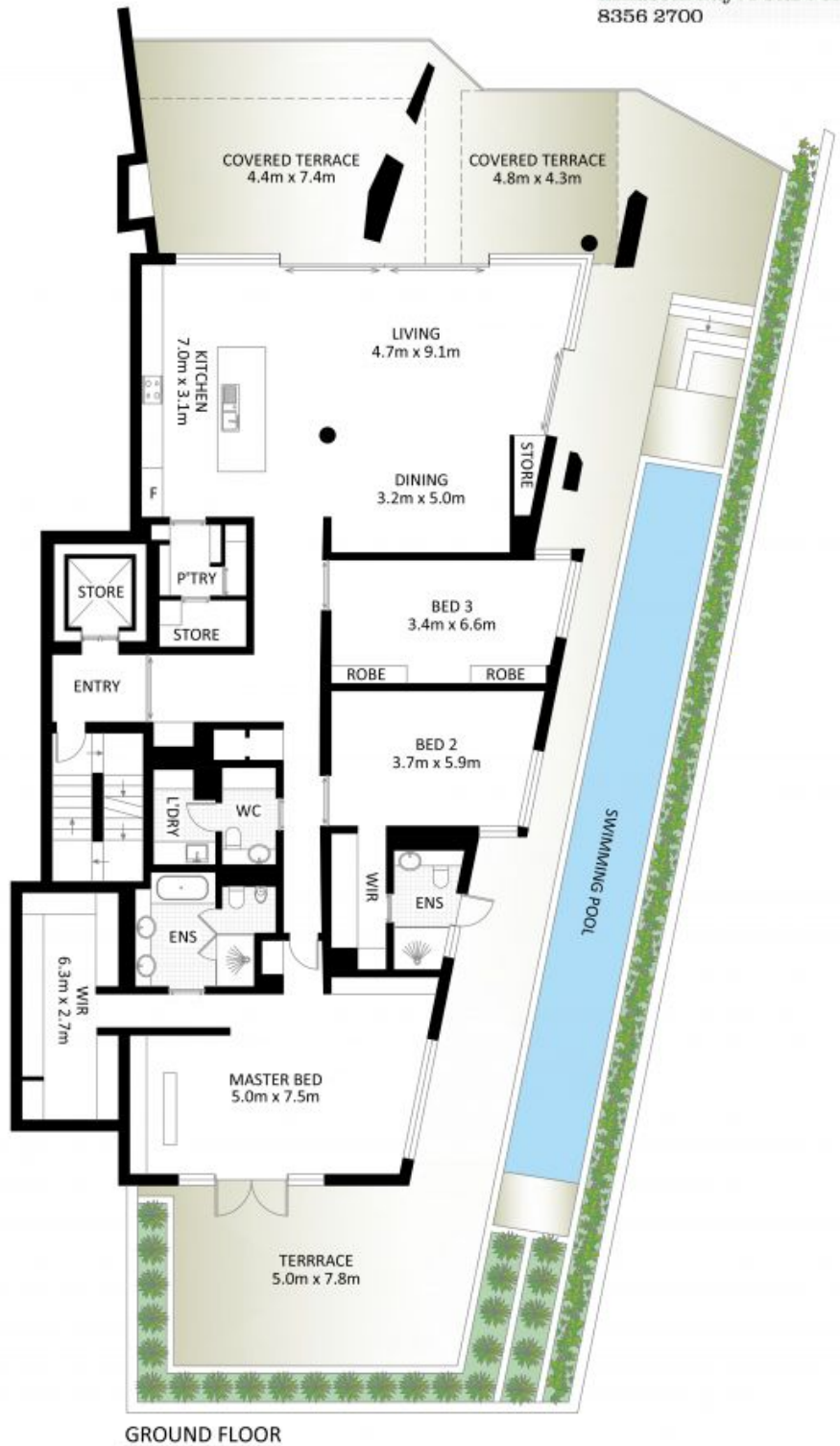
Richardson & Wrench Elizabeth Bay / Potts Point
02 8356 2700



BASEMENT



BASEMENT



GROUND FLOOR

"The Grantham"
1/1 Grantham Street, Potts Point



*PLANS SHOWN ONLY INDICATIVE OF LAYOUT. DIMENSIONS ARE APPROXIMATE.
Measurements are approximate and not to scale. The vendor, agency and supplier will accept no liability for its accuracy. Interested parties are advised to make their own independent enquiries.