



63 Henrietta Street Waverley, NSW

3 bed | 1 bath

A superb opportunity in sought-after Waverley, this 2-level semi combines period heritage with a stunning contemporary update to offer the ideal family home minutes to the iconic beaches of Bronte, Tamarama and Bondi. Renovated for both style and function, the home offers clean lines, luxe finishes and relaxed living spaces, with large scale windows and stylish metal louvres optimising natural light and airflow. The generous rear yard is landscaped to provide an entertainer's oasis, perfect for kids, pets, and celebrating with family and friends.

Framed by engineered oak flooring and high ceilings, th...

R&W

rwebay.com.au/8608486

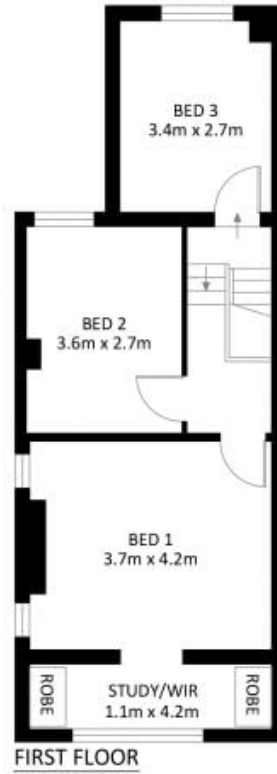
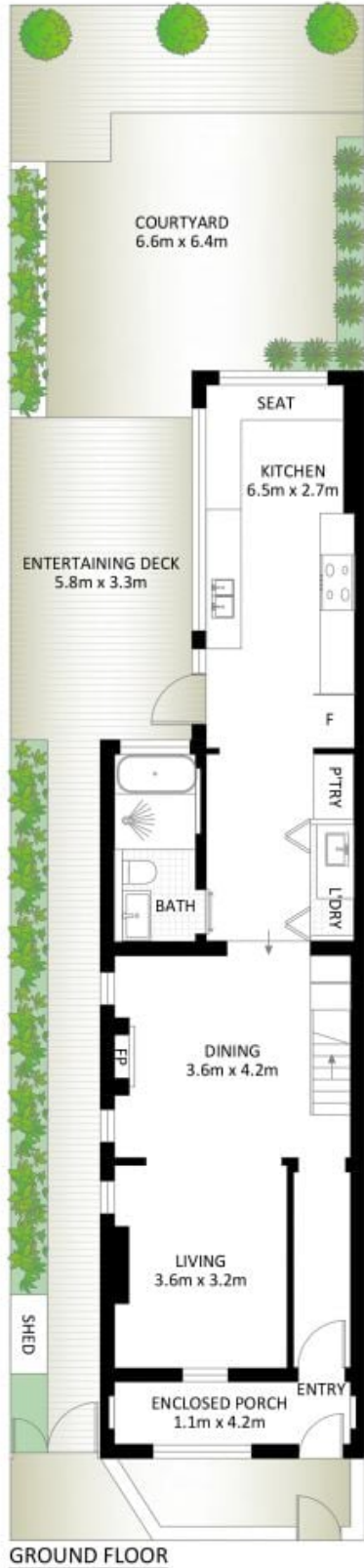
Jason Boon 0418 671 494

Joss Reid 0414 662 391

Geoff Cox 0418 231 004

Proudly Richardson&Wrench

Richardson & Wrench Elizabeth Bay / Potts Point
02 8356 2700



63 Henrietta Street, Waverley



*PLANS SHOWN ONLY INDICATIVE OF LAYOUT. DIMENSIONS ARE APPROXIMATE.

Measurements are approximate and not to scale. The vendor, agency and supplier will accept no liability for its accuracy. Interested parties are advised to make their own independent enquiries.