



## 1/14 Rockwall Crescent Potts Point, NSW

3 bed | 2 bath | 1 car

A sumptuous designer haven of rare distinction, this exquisite 2-level, 3-bedroom maisonette is set within a grand 19th-century merchant's villa in one of Potts Point's most tightly held terrace rows. Beautifully reimaged with exceptional craftsmanship and a sophisticated European sensibility, it blends period elegance with bespoke contemporary style, complete with sunlit courtyard and direct access to secure off-street parking at rear.

Introduced via a private entrance, the home opens to sh...

**R&W**

[rwebay.com.au/8618757](https://www.rwebay.com.au/8618757)

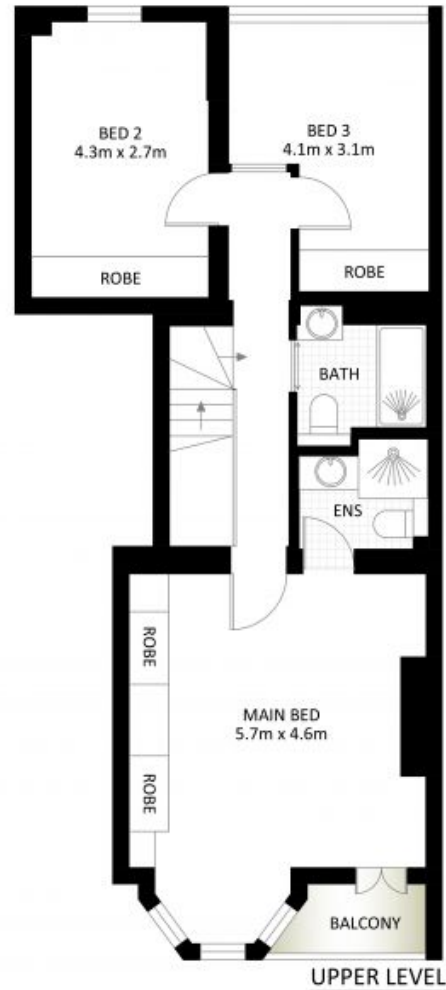
Jason Boon 0418 671 494

Joss Reid 0414 662 391

Geoff Cox 0418 231 004

**Proudly Richardson&Wrench**

Richardson & Wrench Elizabeth Bay / Potts Point  
02 8356 2700



## 1/14 Rockwall Crescent, Potts Point

\*PLANS SHOWN ONLY INDICATIVE OF LAYOUT. DIMENSIONS ARE APPROXIMATE.

Measurements are approximate and not to scale. The vendor, agency and supplier will accept no liability for its accuracy. Interested parties are advised to make their own independent enquiries.

