



29/90-92 Elizabeth Bay Road Elizabeth Bay, NSW

1 bed | 1 bath | 1 car

R&W

Bathed in soft eastern light with harbour views from the living area, kitchen and bedroom, this inviting one-bedroom apartment offers an exceptional blend of outlook, light and lifestyle. Designed for easy living, both the living space and bedroom enjoy direct balcony access, creating a seamless indoor?outdoor connection and a wonderful sense of openness.

The kitchen is positioned to capture harbour views, whi...

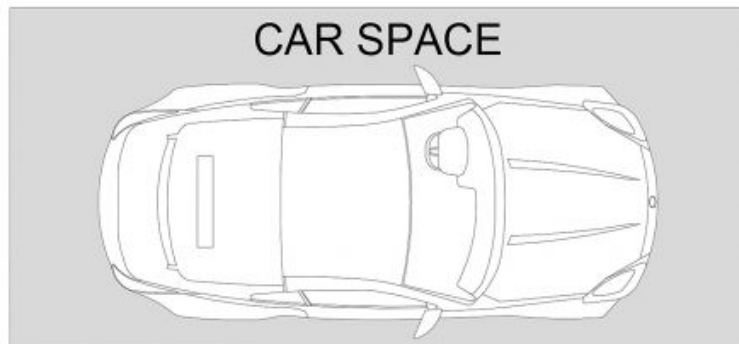
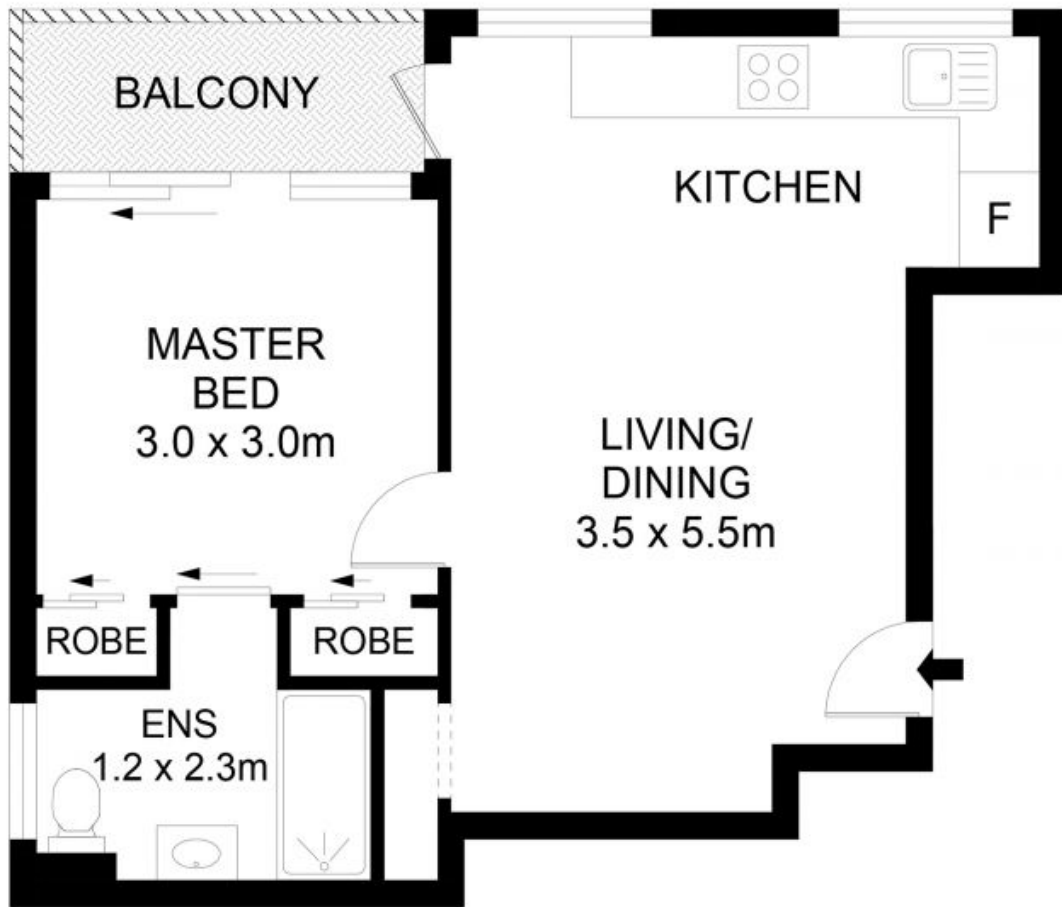
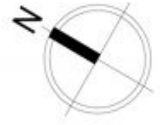
rwebay.com.au/8624717

Angelo Bouras 0401 658 653

Alex Mulholland 0410421182

Proudly Richardson&Wrench

Richardson & Wrench Elizabeth Bay / Potts Point
02 8356 2700



29/90-92 Elizabeth Bay Road, Elizabeth Bay

Disclaimer

Floor Plan measurements are approximate and are for illustrative purposes only. While we cannot doubt the floor plans accuracy, we make no guarantee, warranty or representation as to the accuracy and completeness of the floor plan.

Every precaution has been taken to establish accuracy of the information in this brochure but does not constitute any representation by the vendor or agent.

