



158 Victoria Street Potts Point, NSW

5 bed | 5 bath | 2 car

A brand new bespoke residence behind a superbly renovated Victorian facade with designer interiors and dual street access with double garage, this stately home redefines what it means to live in a Victorian terrace. It boasts a premier address a stroll to some of Sydney's best eateries, as well as supermarkets, rail and foreshore reserves.

Unfolding with perfect poise over multiple levels conne...

R&W

Open Saturday, 30th May 2026 10:45 - 11:15

[rwebay.com.au/8628184](https://www.rwebay.com.au/8628184)

Jason Boon 0418 671 494

Geoff Cox 0418 231 004

Proudly Richardson&Wrench

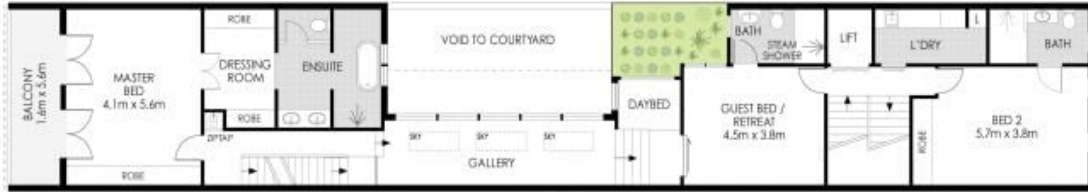
Richardson & Wrench Elizabeth Bay / Potts Point
02 8356 2700



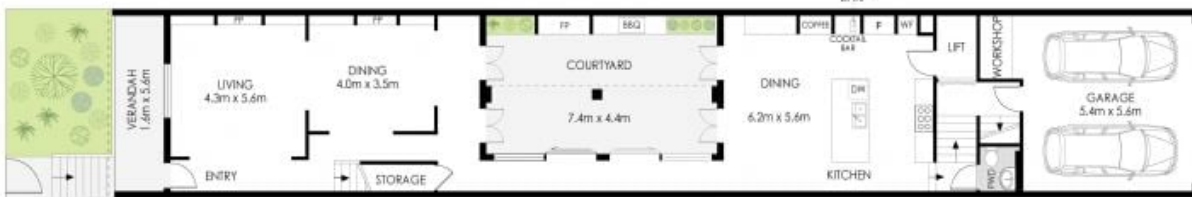
SECOND FLOOR



SECOND FLOOR



FIRST FLOOR



GROUND FLOOR



INT: 383 m²
LAND: 231 m²

158 Victoria Street, Potts Point

PLANS SHOWN ONLY INDICATIVE OF LAYOUT. DIMENSIONS ARE APPROXIMATE.
Measurements are approximate and not to scale. The vendor, agency and supplier will accept no liability for its accuracy. Interested parties are advised to make their own independent enquiries.

Woollahra | Sotheby's
INTERNATIONAL REALTY