



81/6 Greenknowe Avenue Elizabeth Bay, NSW

4 bed | 4 bath | 2 car

R&W

The private residence of celebrated interior designer Alexandra Kidd, this extraordinary dual-level penthouse apartment presents a rare opportunity in the heart of Potts Point. Recently featured in Belle magazine 'Smart Spaces', Habitus Living, and soon to land World's Best - 50 Interiors from Around the Globe IV, the residence is a study in refined, liveable luxury - a luminous sanctuary suspended above Sydney with sweeping harbour and city views. Expansive interiors unfold to sun-drenched terraces wrapping both levels, creating a seamless indoor/outdoor environment conceived for exceptional entertaining and effortless daily life.

...

rwebay.com.au/8628634

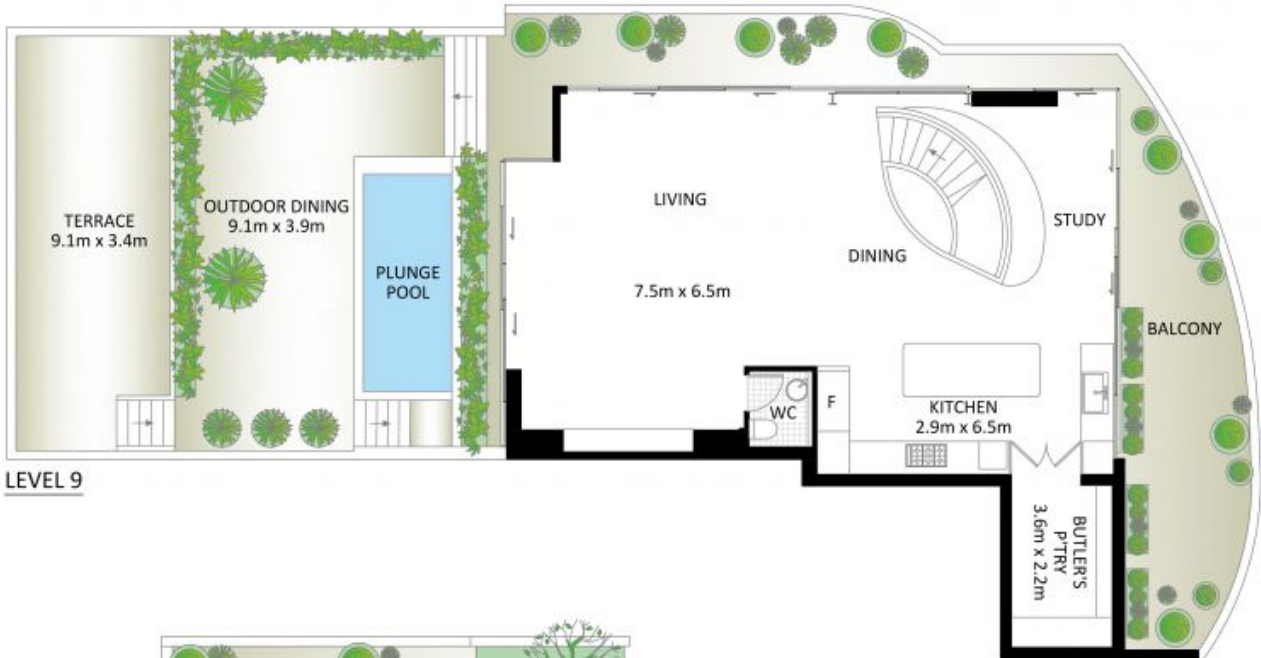
Jason Boon 0418 671 494

Geoff Cox 0418 231 004

Joss Reid 0414 662 391

Proudly Richardson&Wrench

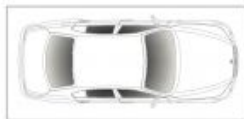
Richardson & Wrench Elizabeth Bay / Potts Point
02 8356 2700



LEVEL 9



LEVEL 8



SECURE COVERED CAR SPACE (NOT ACTUAL LOCATION)



SECURE COVERED CAR SPACE (NOT ACTUAL LOCATION)

81/6 Greenknowe Avenue, Potts Point



*PLANS SHOWN ONLY INDICATIVE OF LAYOUT. DIMENSIONS ARE APPROXIMATE.

Measurements are approximate and not to scale. The vendor, agency and supplier will accept no liability for its accuracy. Interested parties are advised to make their own independent enquiries.