



109/10-12 Macleay Street Elizabeth Bay, NSW

2 bed | 1 bath | 1 car

Set within the iconic Macleay Regis, this elegant Art Deco apartment showcases timeless character, generous proportions and captivating harbour and bay views stretching to the Heads. Quietly positioned to the rear of the building, it enjoys exceptional privacy, abundant natural light and a peaceful outlook.

Original c.1920s features are beautifully preserved, in...

R&W

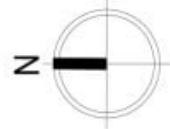
rwebay.com.au/8639281

Angelo Bouras 0401 658 653

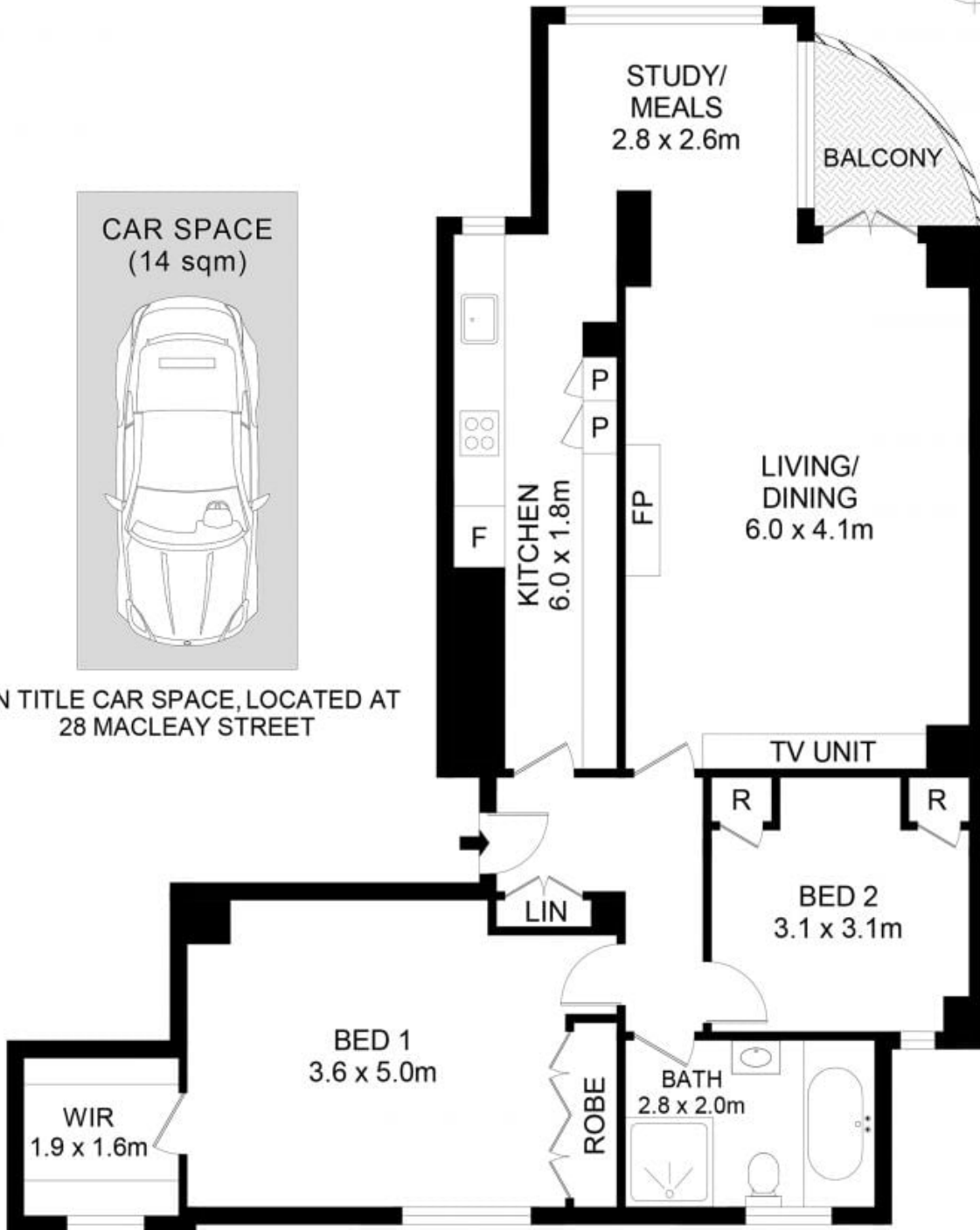
Greg McKinley 0412 044 822

Proudly Richardson&Wrench

Richardson & Wrench Elizabeth Bay / Potts Point
02 8356 2700



ON TITLE CAR SPACE, LOCATED AT
28 MACLEAY STREET



109/10-12 Macleay Street, Potts Point

Disclaimer

Floor Plan measurements are approximate and are for illustrative purposes only. While we cannot doubt the floor plans accuracy, we make no guarantee, warranty or representation as to the accuracy and completeness of the floor plan.