



## 601/3 Kings Cross Road Darlinghurst, NSW

1 bed | 1 bath

Positioned on the north-west corner of the award-winning Altair, this spacious 76sqm one-bedroom apartment delivers refined inner-city living with exceptional natural light, airflow and outlooks. Elevated within the building, it enjoys city and harbour glimpses and a seamless indoor-outdoor connection to a generous full-length balcony.

- [ ] Spacious one-bedroom apartment, 76sqm

Approx. Outgoings:...

# R&W

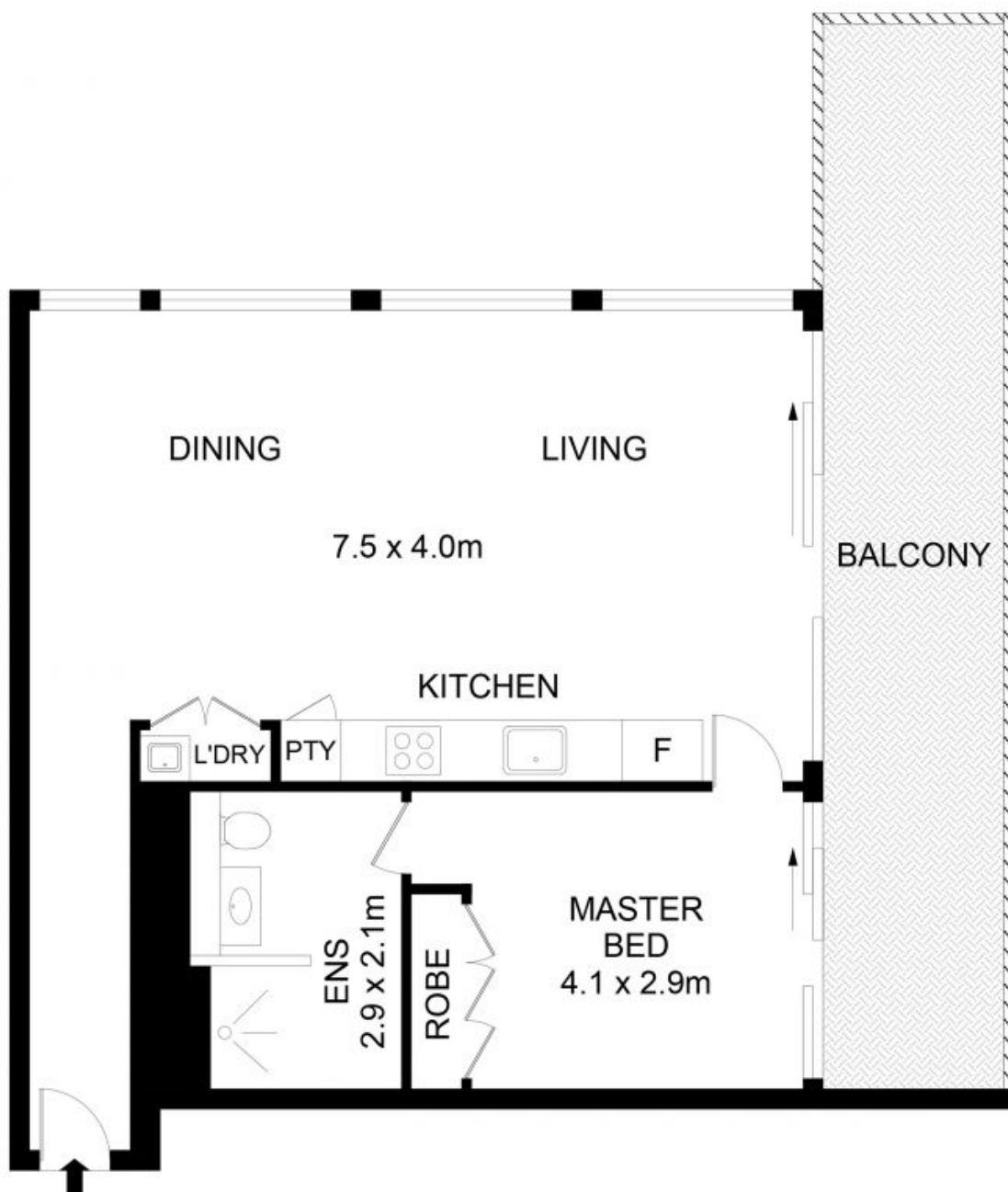
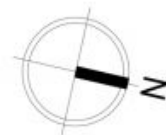
[rwebay.com.au/8639383](https://rwebay.com.au/8639383)

Angelo Bouras 0401 658 653

Alex Mulholland 0410421182

**Proudly Richardson&Wrench**

Richardson & Wrench Elizabeth Bay / Potts Point  
02 8356 2700



## 601/3 Kings Cross Road, Darlinghurst

### Disclaimer

Floor Plan measurements are approximate and are for illustrative purposes only. While we cannot doubt the floor plans accuracy, we make no guarantee, warranty or representation as to the accuracy and completeness of the floor plan.

Every precaution has been taken to establish accuracy of the information in this brochure but does not constitute any representation by the vendor or agent.

**R&W**