



45/25 Billyard Avenue Elizabeth Bay, NSW

2 bed | 1 bath

R&W

For the first time offered to the market in over 30 years and set on the top floor of landmark building Caversham Court, this elegant Art Deco apartment presents an excellent opportunity in one of Elizabeth Bay's most exclusive harbourside pockets. Peacefully positioned to the rear of the boutique security block, the home occupies a prized corner setting, welcoming abundant natural light into every room. Views from the generous living and dining area capture the beloved district skyline, and both bedrooms enjoy tranquil leafy outlooks.

Set amongst beautifully maintained tropical grounds, th...

rwebay.com.au/8640690

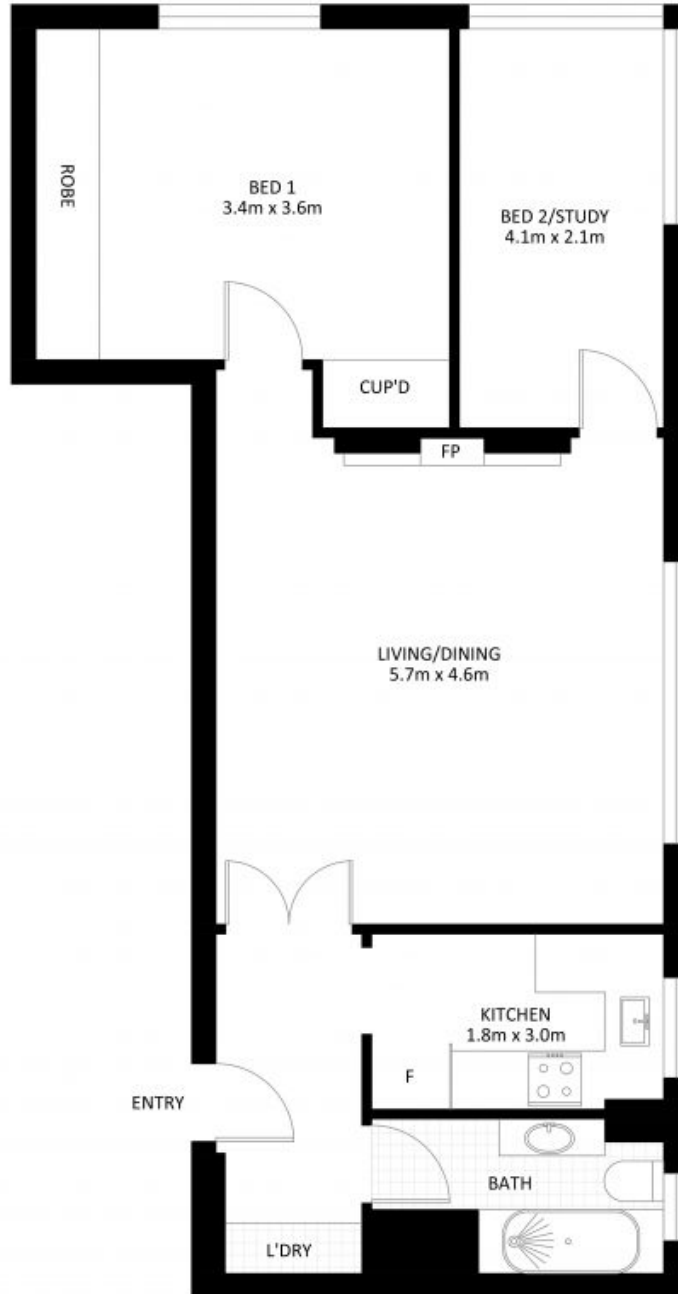
Joss Reid 0414 662 391

Geoff Cox 0418 231 004

Jason Boon 0418 671 494

Proudly Richardson&Wrench

Richardson & Wrench Elizabeth Bay / Potts Point
02 8356 2700



45/25 Billyard Avenue, Elizabeth Bay



*PLANS SHOWN ONLY INDICATIVE OF LAYOUT. DIMENSIONS ARE APPROXIMATE.

Measurements are approximate and not to scale. The vendor, agency and supplier will accept no liability for its accuracy. Interested parties are advised to make their own independent enquiries.