



28/20 Macleay Street Potts Point, NSW

2 bed | 2 bath

Positioned within the prestigious Twenty Macleay Street, this expansive 123m² (approx.) residence offers house-like proportions, sweeping harbour views and beautifully renovated interiors. Located at the rear being quiet with an east-facing aspect, the apartment enjoys abundant natural light and convenient level lift access within this landmark Art-Deco building.

Capturing iconic outlooks towards the harbour heads fro...

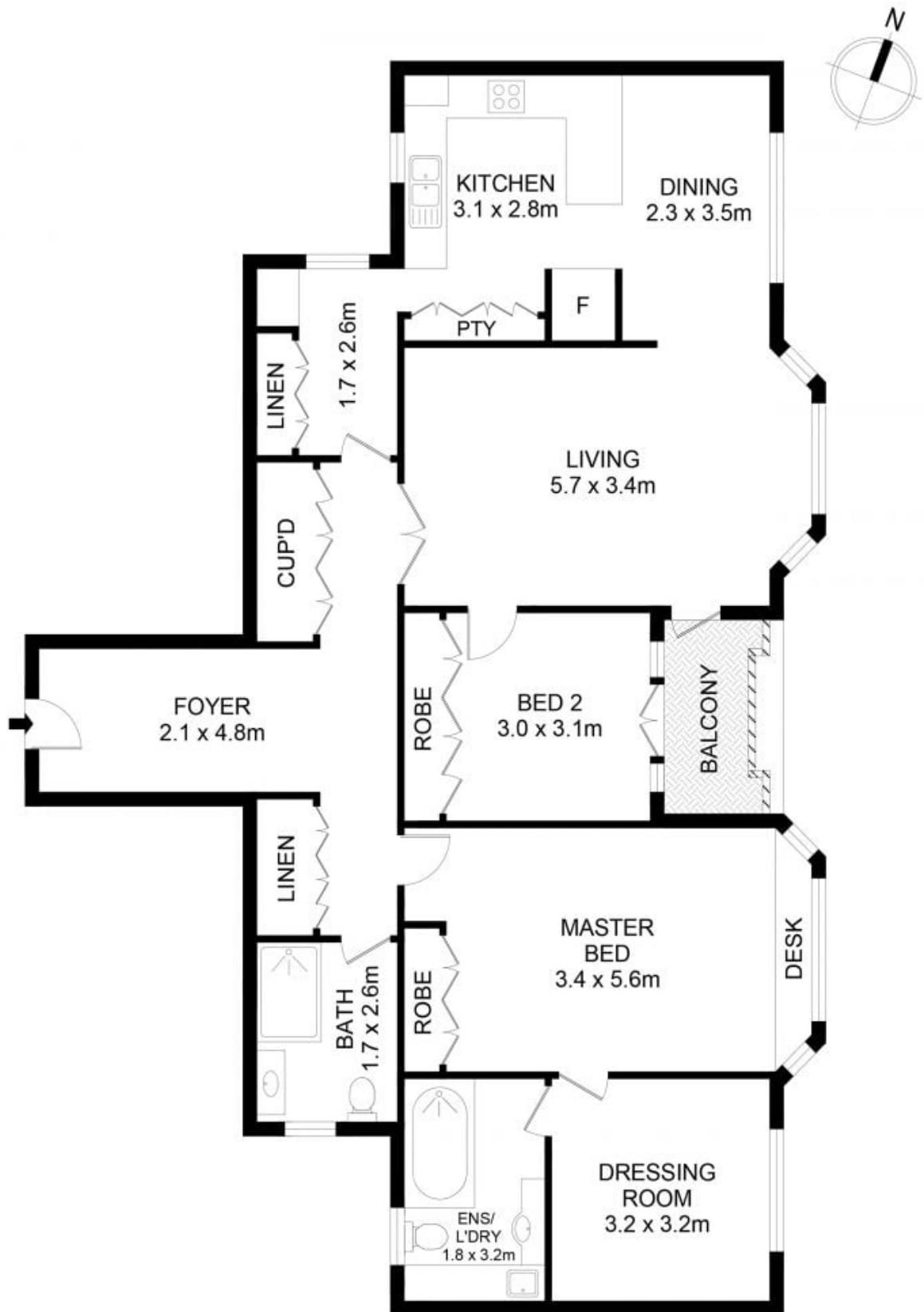
R&W

Auction Thursday, 18th June 5:30
R&W Offices, Shop 2/75 Macleay St, Potts Point
[opera.com.au/8644018](https://www.opera.com.au/8644018)

Angelo Bouras 0401 658 653
Greg McKinley 0412 044 822

Proudly Richardson&Wrench

Richardson & Wrench Elizabeth Bay / Potts Point
02 8356 2700



28/20 Macleay Street, Potts Point



Disclaimer

Floor Plan measurements are approximate and are for illustrative purposes only. While we cannot doubt the floor plans accuracy, we make no guarantee, warranty or representation as to the accuracy and completeness of the floor plan.

Every precaution has been taken to establish accuracy of the information in this brochure but does not constitute any representation by the vendor or agent.

R&W