



42/15 Wylde Street Potts Point, NSW

| 1 bath

Tucked away on the 6th floor of the Denison building is this stylish, newly renovated studio apartment resplendent with panoramic views. From the parquetry flooring to the timeless colour ways plus the use of sheer blinds to control light, this private haven exudes warmth and a bespoke timeless quality.

R&W

[Opibay.com.au/8644213](https://www.opibay.com.au/8644213)

Joss Reid 0414 662 391

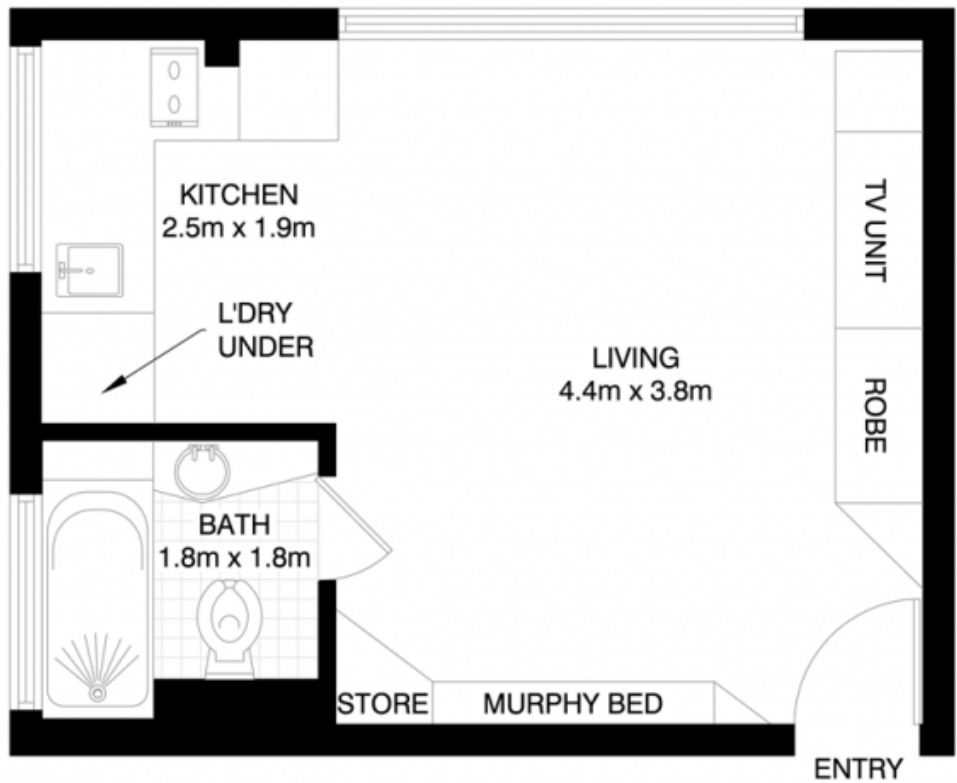
Geoff Cox 0418 231 004

Jason Boon 0418 671 494

Proudly Richardson&Wrench

Richardson & Wrench Elizabeth Bay / Potts Point
02 8356 2700

Be it as a home, an investment or city bolt-hole, this ...



POTTS POINT
42/15 WYLDE STREET



*PLANS SHOWN ONLY INDICATIVE OF LAYOUT. DIMENSIONS ARE APPROXIMATE.
Floor plan supplied by V-Mark Design Pty Ltd. This floor plan is provided for indicative purposes only.
Measurements are approximate and not to scale. The vendor, agency and supplier will accept no liability for its accuracy. Interested parties are advised to make their own independent enquiries.