



## 49 Crown Street Woolloomooloo, NSW

3 bed | 1 bath

- Occupying a prized city fringe corner position
- Character filled extra wide terrace ready for reinvention
- First time offered for sale in 39 years
- Flexible zoning allows residential, commercial & retail uses (STCA)

Occupying a prized corner position in the heart of Woolloomooloo, 49 Crown Street presents an outstanding opportunity to secure a substantial 202m<sup>2</sup> (approx.) holding with the potential to renovate and add value to suit your intended use (STCA).

...

# R&W

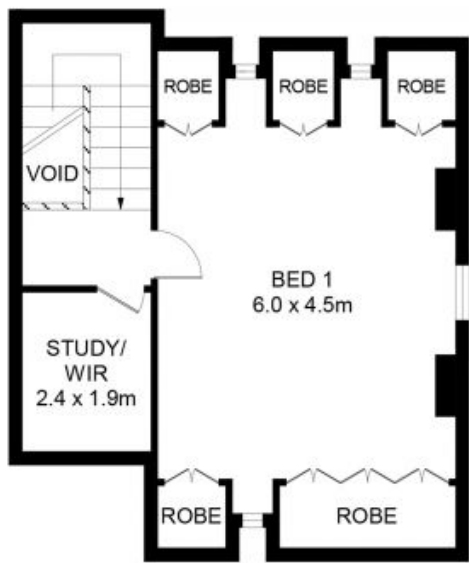
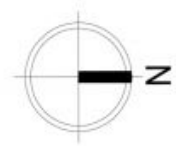
[rwebay.com.au/8646563](http://rwebay.com.au/8646563)

Angelo Bouras 0401 658 653

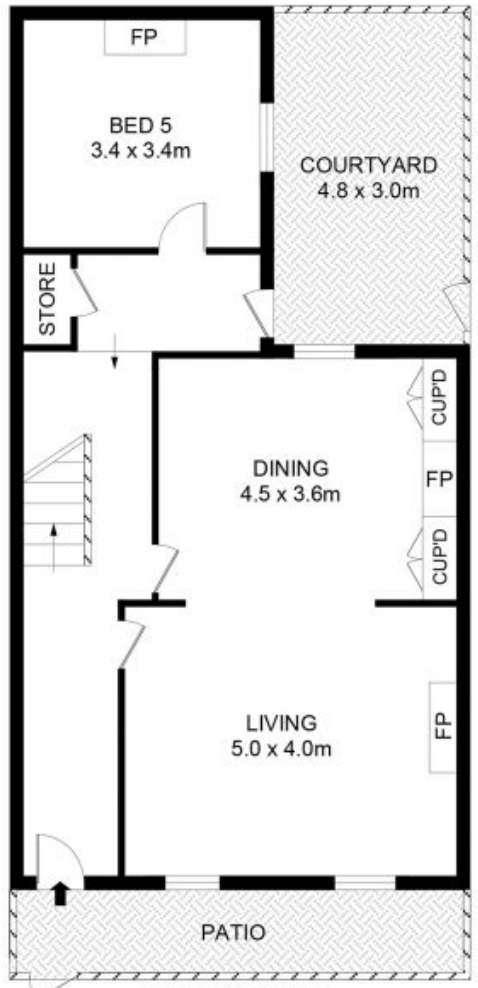
Alex Mulholland 0410421182

**Proudly Richardson&Wrench**

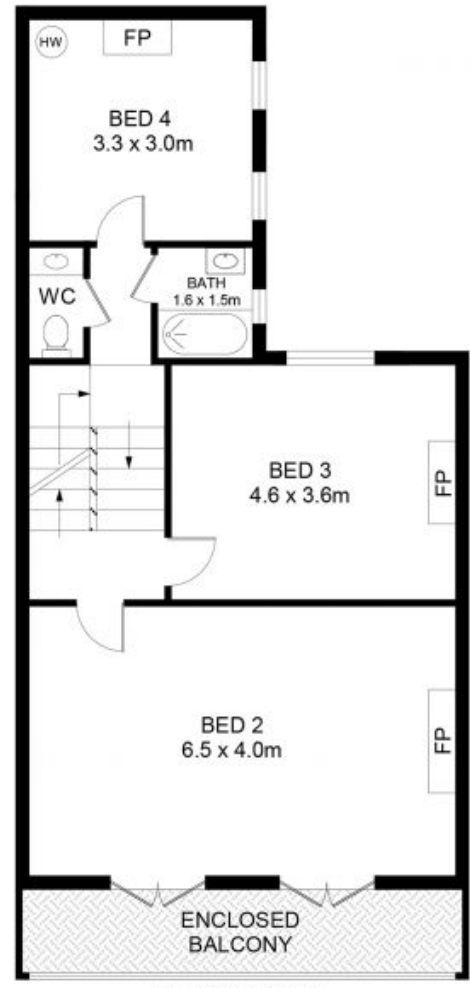
Richardson & Wrench Elizabeth Bay / Potts Point  
02 8356 2700



TOP LEVEL

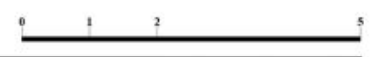


ENTRY LEVEL



FIRST LEVEL

# 49 Crown Street, Woolloomooloo



**Disclaimer**  
 Floor Plan measurements are approximate and are for illustrative purposes only. While we cannot doubt the floor plans accuracy, we make no guarantee, warranty or representation as to the accuracy and completeness of the floor plan.

Every precaution has been taken to establish accuracy of the information in this brochure but does not constitute any representation by the vendor or agent.

