



11 Roslyn Gardens ELIZABETH BAY, NSW

3 bed | 1 bath

Owned by one family since 1948, this 3-storey classic New York style freehold property is corner positioned alongside Sydney's grandest row of Victorian terrace-houses. Zoned Mixed Uses and ready for an imaginative transformation, seldom will home buyers/investors find such incredible potential in this exclusive harbourside/parkside locale. Ideal for a home + income or chic private residence or home and office in one, the character-filled current layout has a commercial space occupying the ground floor, plus separate access to 2 levels of accommodation above. The best is yet to come!

R&W

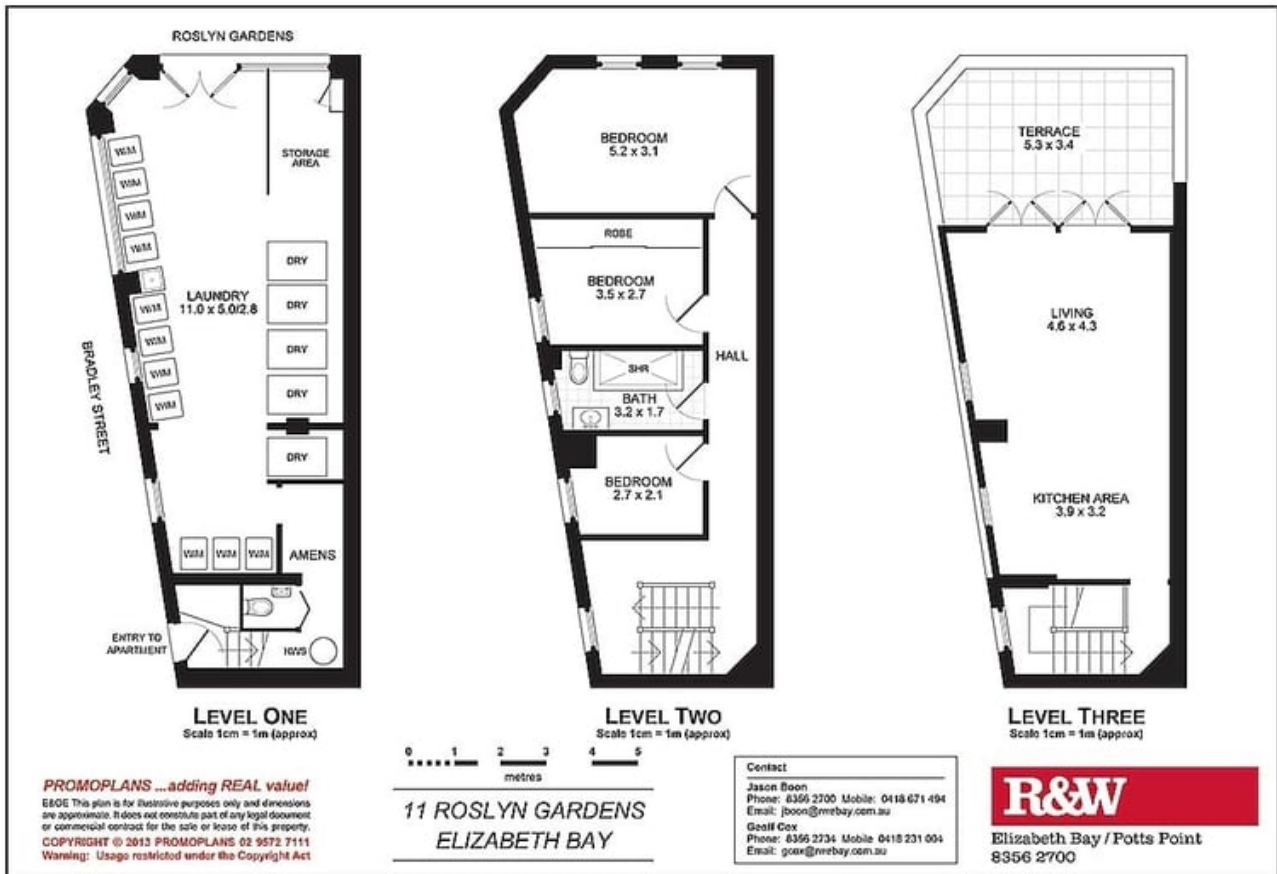
rwebay.com.au/864935

Jason Boon 0418 671 494

Geoff Cox 0418 231 004

Proudly Richardson&Wrench

Richardson & Wrench Elizabeth Bay / Potts Point
02 8356 2700



Every precaution has been taken to establish accuracy of the information in this brochure but does not constitute any representation by the vendor or agent.

R&W