



14/71 Victoria Street Potts Point, NSW

2 bed | 2 bath | 1 car

Positioned within the prestigious Waratah complex, this expansive two-bedroom security apartment delivers an exceptional lifestyle in one of Sydney's most sought-after urban locations. Showcasing a sleek open-plan design, the home features a gourmet kitchen with Caesarstone benchtops, induction cooktop, and breakfast bar, flowing effortlessly into Italian-tiled living and dining spaces and out to a generous alfresco terrace.

Both bedrooms offer built-in wardrobes and balcony acce...

R&W

Open Saturday, 18th April 2026 1:00 - 1:30

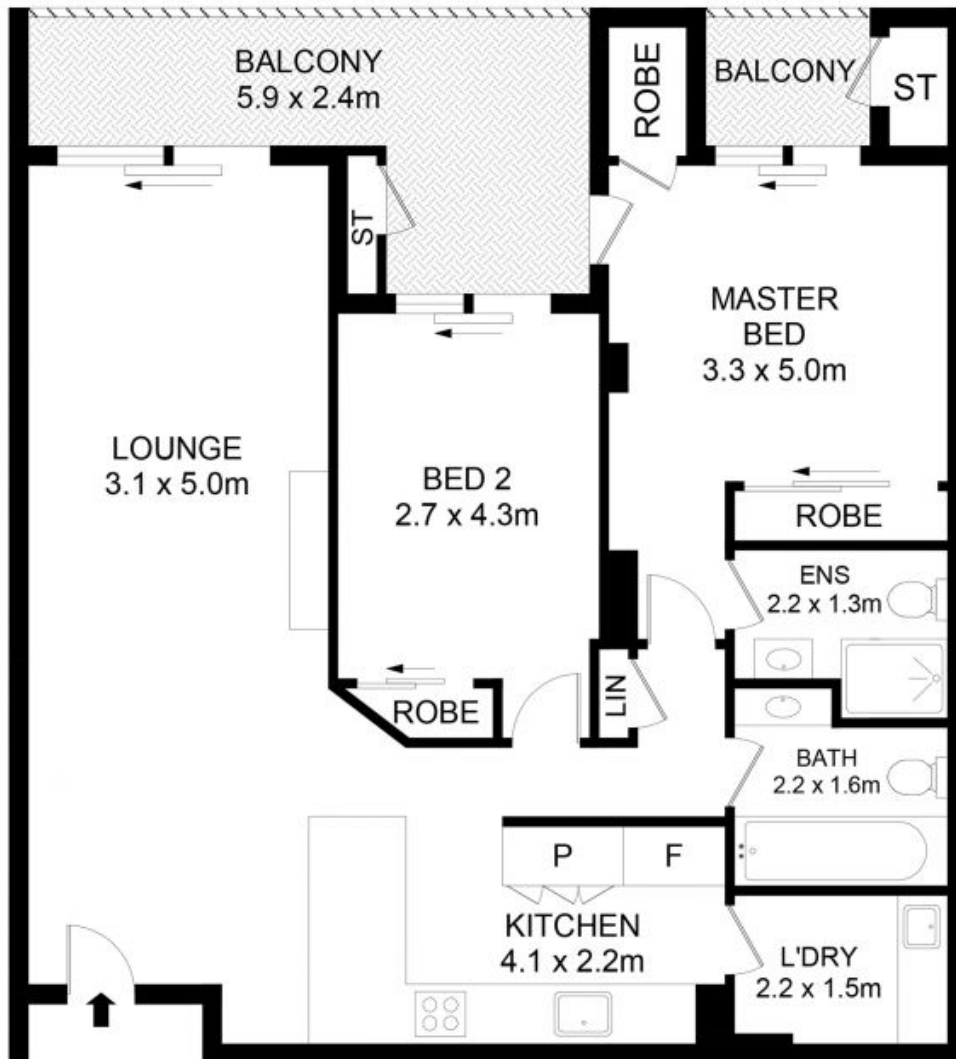
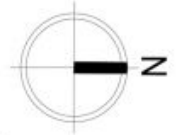
rwebay.com.au/8650251

Angelo Bouras 0401 658 653

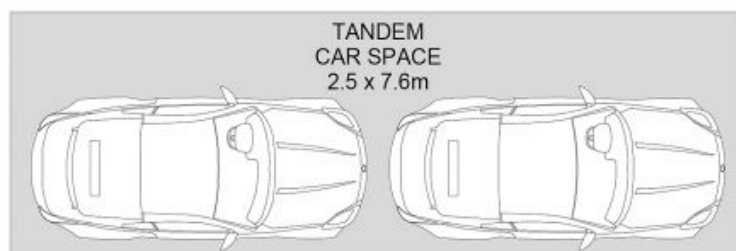
Alex Mulholland 0410421182

Proudly Richardson&Wrench

Richardson & Wrench Elizabeth Bay / Potts Point
02 8356 2700



LEVEL 4



BASEMENT



14/71 Victoria Street, Potts Point

Disclaimer

Floor Plan measurements are approximate and are for illustrative purposes only. While we cannot doubt the floor plans accuracy, we make no guarantee, warranty or representation as to the accuracy and completeness of the floor plan.