



## 33/7 Springfield Avenue Potts Point, NSW

2 bed | 1 bath

A note-perfect elevated haven in a revered building, postcard views and a radiant lifestyle await in this sumptuous 2-bed apartment in the heart of Potts Point. Set on the 7th level of the Art Deco c1926 Walter Lesley Neilsen-designed 'Carinthia', it boasts Sydney Harbour Bridge and CBD skyline views coupled with all the graceful hallmarks of the Deco period.

Boasting 3m ceilings, polished floorboards, ample perio...

# R&W

**Auction Thursday, 28th May 5:30**

**R&W Offices, Shop 2/75 Macleay St, Potts Point**

**[opera.com.au/8650959](https://www.opera.com.au/8650959)**

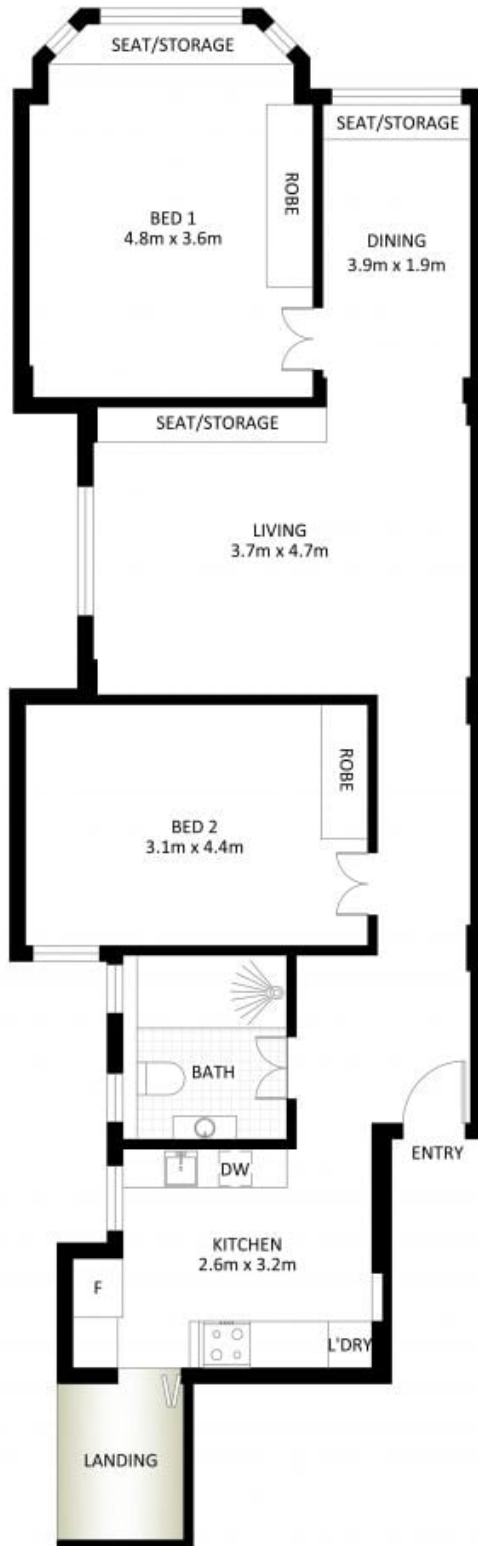
Jason Boon 0418 671 494

Geoff Cox 0418 231 004

Joss Reid 0414 662 391

**Proudly Richardson&Wrench**

Richardson & Wrench Elizabeth Bay / Potts Point  
02 8356 2700



## 33/7 Springfield Avenue, Potts Point



\*PLANS SHOWN ONLY INDICATIVE OF LAYOUT. DIMENSIONS ARE APPROXIMATE.

Measurements are approximate and not to scale. The vendor, agency and supplier will accept no liability for its accuracy. Interested parties are advised to make their own independent enquiries.