



906/2A Elizabeth Bay Road Elizabeth Bay, NSW

1 bed | 1 bath | 1 car

R&W

Positioned on level 9 within the sought-after 'Gazebo' complex, this split-level apartment offers a stylish cityside lifestyle with a prized north-west aspect, capturing abundant natural light and elevated district and harbour views, along with glimpses of the city skyline.

rwebay.com.au/8654271

Angelo Bouras 0401 658 653

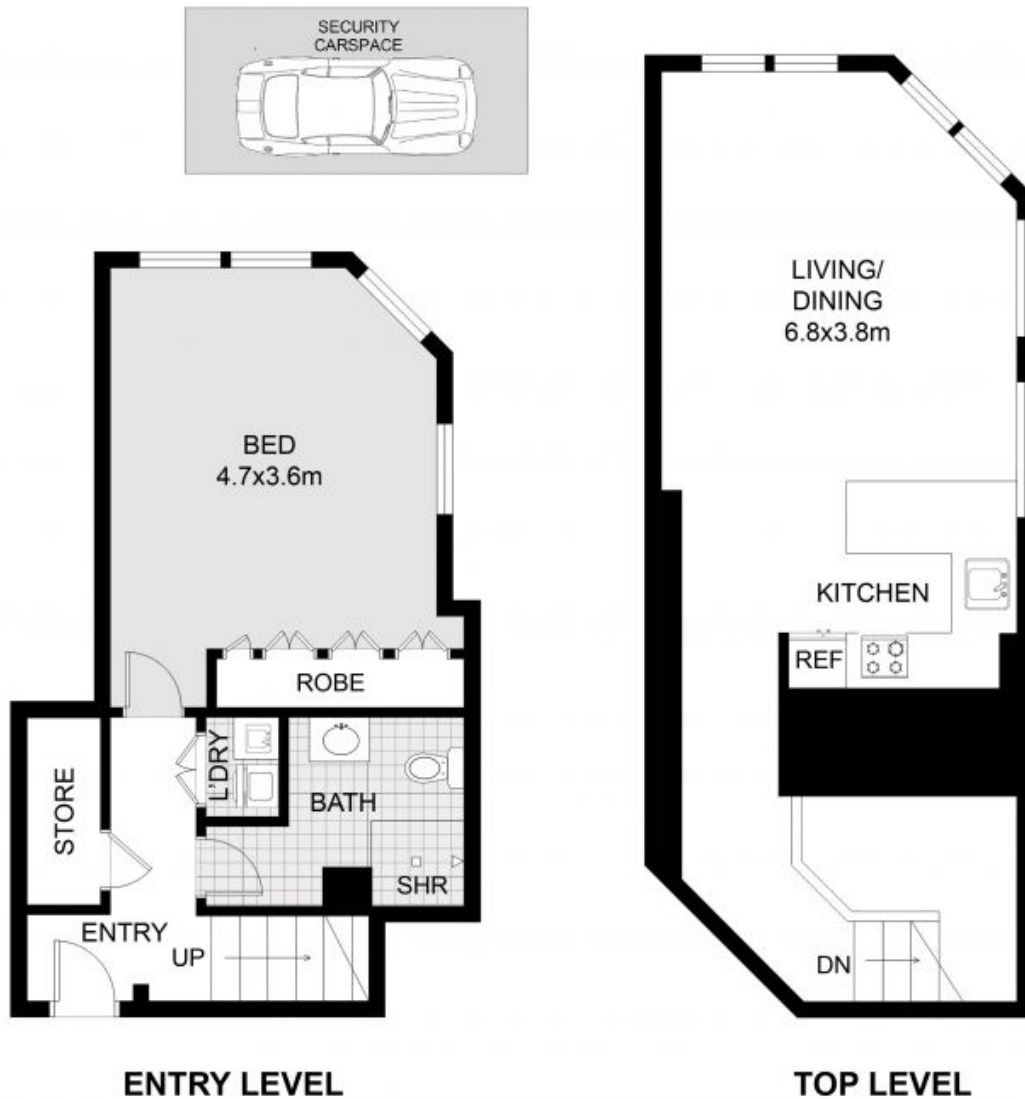
Alex Mulholland 0410421182

Proudly Richardson&Wrench

Richardson & Wrench Elizabeth Bay / Potts Point
02 8356 2700

- [] Level 9 position with district and harbour views

Approx. Outgoings:...



This floor plan including furniture, fixture measurements and dimensions are approximate and for illustrative purposes only. BoxBrownie.com gives no guarantee, warranty or representation as to the accuracy and layout. All enquiries must be directed to the agent, vendor or party representing this floor plan.



906/2a Elizabeth Bay Road, Elizabeth Bay NSW 2011

Every precaution has been taken to establish accuracy of the information in this brochure but does not constitute any representation by the vendor or agent.