



3/128 Victoria Street Potts Point, NSW

2 bed | 1 bath

Note: Private Entry on Orwell Street

Set within a classic Potts Point terrace, this beautifully updated split-level residence delivers rare privacy, abundant natural light and an exceptional indoor-outdoor lifestyle, complete with a large courtyard and separate entrance.

The kitchen is well appointed with gas cooking and a di...

R&W

Open Thursday, 21st May 2026 11:00 - 11:30

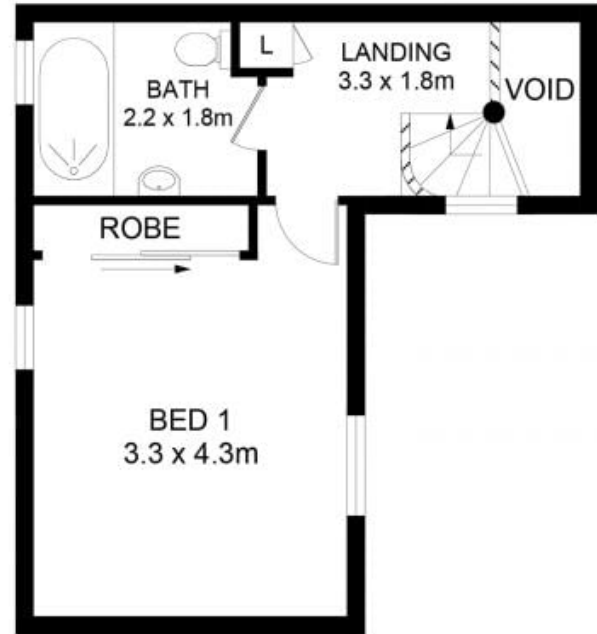
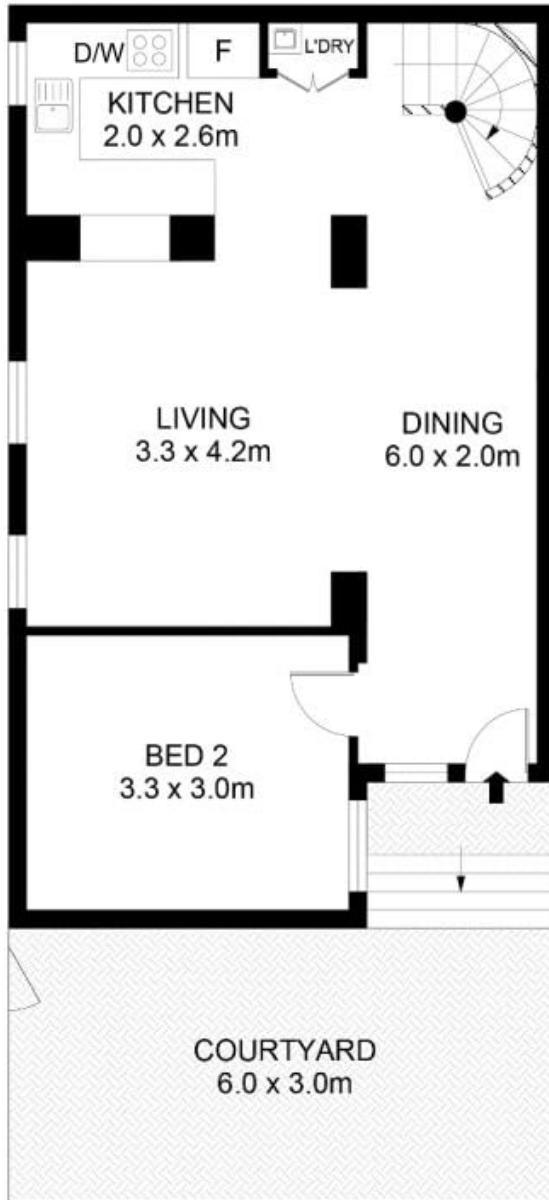
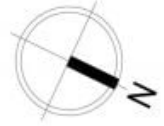
rwebay.com.au/8657744

Penny Timothy 0418 546 500

Luke McDonnell 0418 844 110

Proudly Richardson&Wrench

Richardson & Wrench Elizabeth Bay / Potts Point
02 8356 2700



3/128 Victoria Street, Potts Point



Disclaimer

Floor Plan measurements are approximate and are for illustrative purposes only. While we cannot doubt the floor plans accuracy, we make no guarantee, warranty or representation as to the accuracy and completeness of the floor plan.

Every precaution has been taken to establish accuracy of the information in this brochure but does not constitute any representation by the vendor or agent.

