



## 446/6 Cowper Wharf Road Woolloomooloo, NSW

1 bed | 1 bath

**R&W**

Enjoying an elevated position overlooking the water and bathed in natural light, this executive studio apartment presents as a desirable

Finger Wharf is unquestionably one of Sydney's finest addresses, completed in 1915, and housing an array of cafes, exclusive restaurants, the boutique Ovolo Hotel, a secure parking station and private marina, with the apartment providing the perfect balance of low maintenance living, prestige and convenience.

Complete with premium security, on-site leisure facilit...

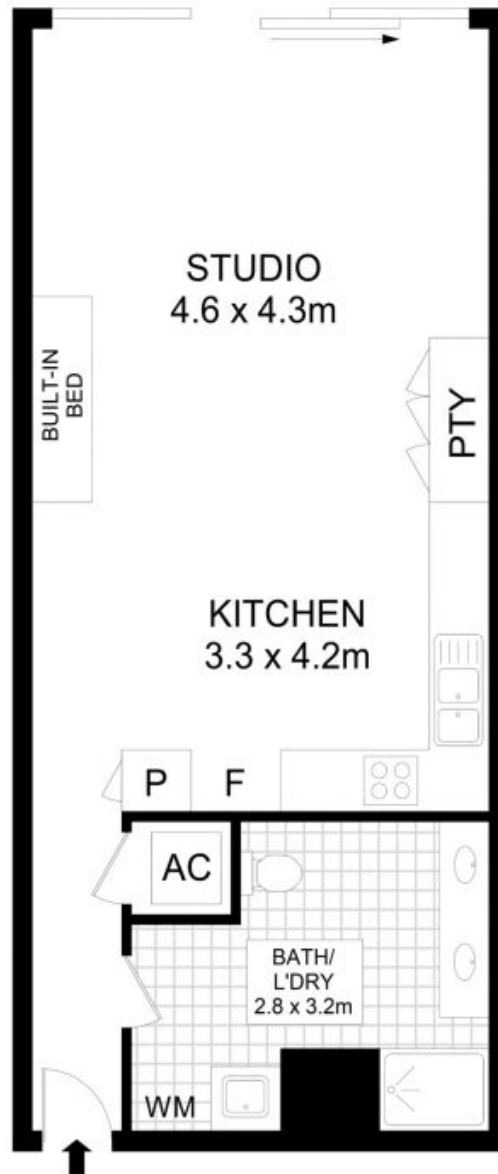
[rwebay.com.au/8661518](http://rwebay.com.au/8661518)

Reeve Smith 0450919965

R&W Leasing 02 8356 2700

**Proudly Richardson&Wrench**

Richardson & Wrench Elizabeth Bay / Potts Point  
02 8356 2700



## 446/6 Cowper Wharf Roadway, Woolloomooloo

### Disclaimer

Floor Plan measurements are approximate and are for illustrative purposes only. While we cannot doubt the floor plans accuracy, we make no guarantee, warranty or representation as to the accuracy and completeness of the floor plan.

Every precaution has been taken to establish accuracy of the information in this brochure but does not constitute any representation by the vendor or agent.

**R&W**