



63/8 Birtley Place Elizabeth Bay, NSW

2 bed | 1 bath

Positioned high on Level 6 of the iconic 'Birtley Towers', this character-rich apartment offers a rare opportunity to secure a home of timeless elegance with a light, bright outlook. Ready to move in or an outstanding renovation opportunity in one of Elizabeth Bay's most tightly held addresses.

Designed by acclaimed architect Emil Sodersten and built in 1934, 'Birtley Towers' is renowned for its gated entry, circular driveway and magnificent domed lobby with etched mirror and stained-glass windows set against rich wood panelling.

Complete with secure basement storage on title, residen...

R&W

Auction Thursday, 7th May 5:30

Richardson & Wrench Auction Room, 75 Macleay Street

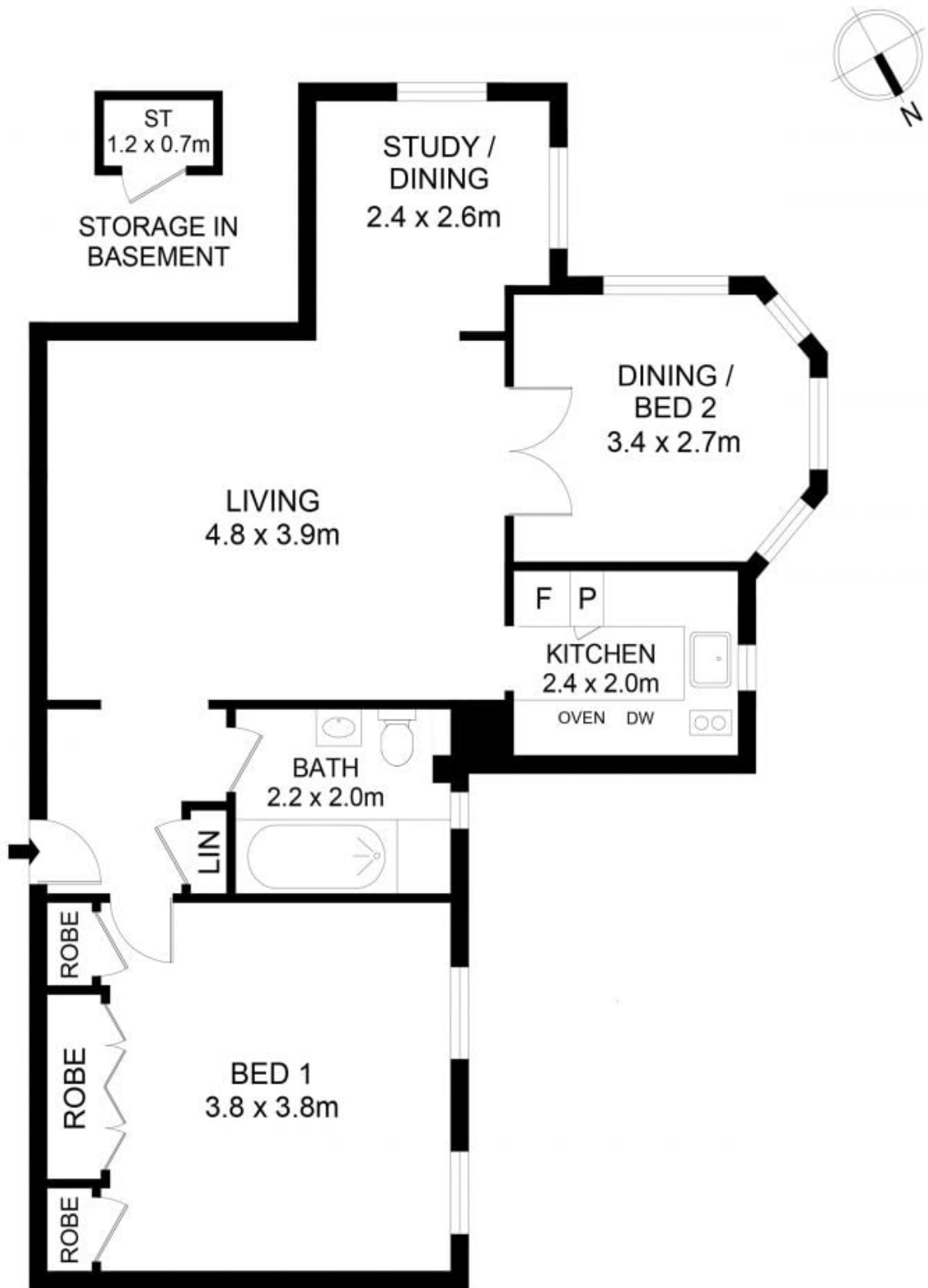
Realestate.com.au/8669035

Penny Timothy 0418 546 500

Luke McDonnell 0418 844 110

Proudly Richardson & Wrench

Richardson & Wrench Elizabeth Bay / Potts Point
02 8356 2700



63/8 Birtley Place, Elizabeth Bay



Disclaimer

Floor Plan measurements are approximate and are for illustrative purposes only. While we cannot doubt the floor plans accuracy, we make no guarantee, warranty or representation as to the accuracy and completeness of the floor plan.