



## 7/1 Springfield Avenue Potts Point, NSW

2 bed | 1 bath | 1 car

Positioned within a tightly held Art Deco block in the heart of Potts Point, this character-filled residence combines timeless 1930s craftsmanship with outstanding scope to personalise and add value. Offering a highly adaptable floorplan, the apartment is currently configured as a generous two-bedroom plus sunroom, easily functioning as a third bedroom, home office or nursery.

Defined by its soaring ornate ceilings, solid double-br...

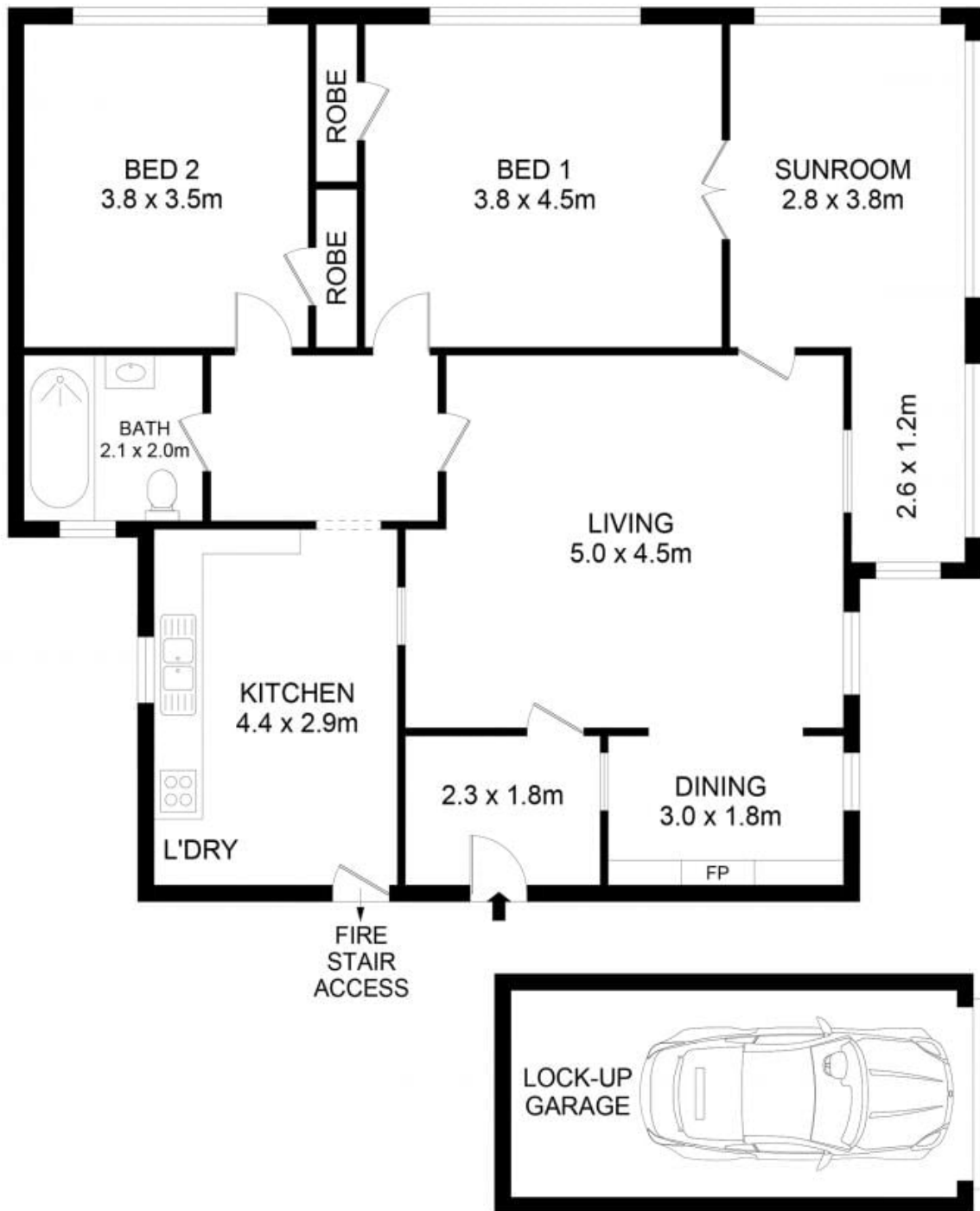
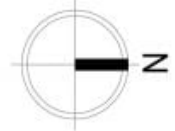
# R&W

**Auction Monday, 22nd June 5:30**  
**R&W Offices, Shop 2/75 Macleay St, Potts Point**  
 Open Saturday, 30th May 2026 12:15 - 12:45  
[rwebay.com.au/8683564](http://rwebay.com.au/8683564)

Angelo Bouras 0401 658 653  
 Alex Mulholland 0410421182

**Proudly Richardson&Wrench**

Richardson & Wrench Elizabeth Bay / Potts Point  
 02 8356 2700



## 7/1 Springfield Avenue, Potts Point



### Disclaimer

Floor Plan measurements are approximate and are for illustrative purposes only. While we cannot doubt the floor plans accuracy, we make no guarantee, warranty or representation as to the accuracy and completeness of the floor plan.