



1/14 Rockwall Crescent Potts Point, NSW

3 bed | 2 bath | 1 car

R&W

This stylish 3-bedroom, 2-level living offers privacy, space, and modern comfort in a sought-after Potts Point location. Set within a grand terrace, it combines classic charm with contemporary finishes, complete with a sunny courtyard and secure rear parking.

The home features a bright living area with bay window, a handy study nook, and a north-facing kitchen with quality appliances flowing to a private courtyard-perfect for entertaining.

Upstairs, all three bedrooms include built-in wardrobes...

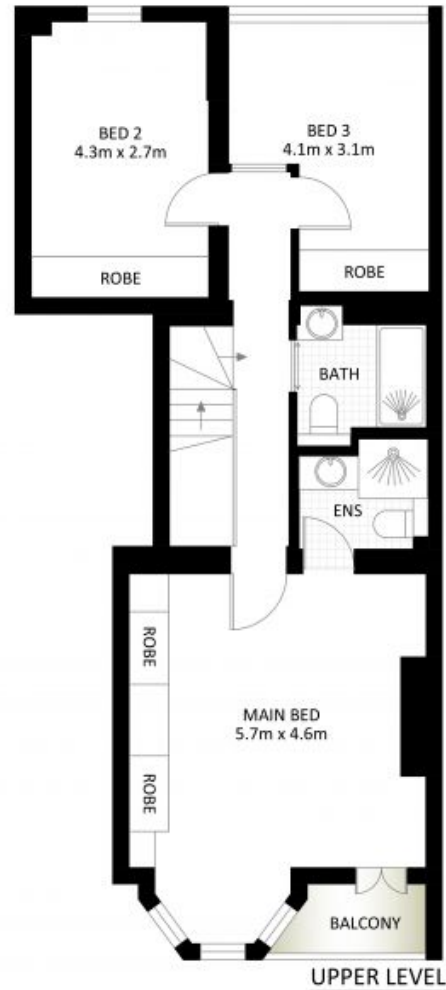
rwebay.com.au/8687176

Claudia Pope

R&W Leasing 02 8356 2700

Proudly Richardson&Wrench

Richardson & Wrench Elizabeth Bay / Potts Point
02 8356 2700



1/14 Rockwall Crescent, Potts Point

*PLANS SHOWN ONLY INDICATIVE OF LAYOUT. DIMENSIONS ARE APPROXIMATE.

Measurements are approximate and not to scale. The vendor, agency and supplier will accept no liability for its accuracy. Interested parties are advised to make their own independent enquiries.

