



73 Hewlett Street Bronte, NSW

6 bed | 4 bath | 4 car

A masterclass in contemporary coastal luxury, this exceptional freestanding residence delivers the ultimate beach house experience, unfolding across 3 sublime levels of sun-drenched Hamptons-inspired living. Set within a prized Bronte enclave just moments from the sand, the home rests on an expansive 730sqm (approx.) parcel, north-facing to the front and privately set behind established front gardens. To the rear, a coveted aspect captures sweeping views across Bronte Gully to the ocean, creating a breathtaking natural backdrop.

Design-led interiors showcase dramatic proportions and ...

R&W

Auction Tuesday, 2nd June 5:30

On Site

Open Wednesday, 13th May 2026 9:30 - 10:00

[rwebay.com.au/8696682](https://www.rwebay.com.au/8696682)

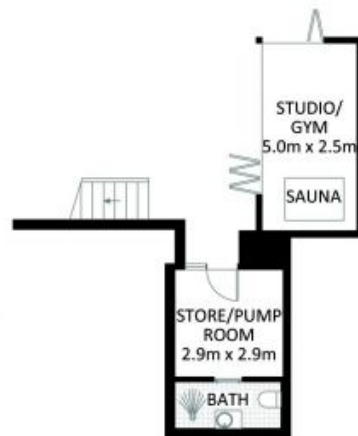
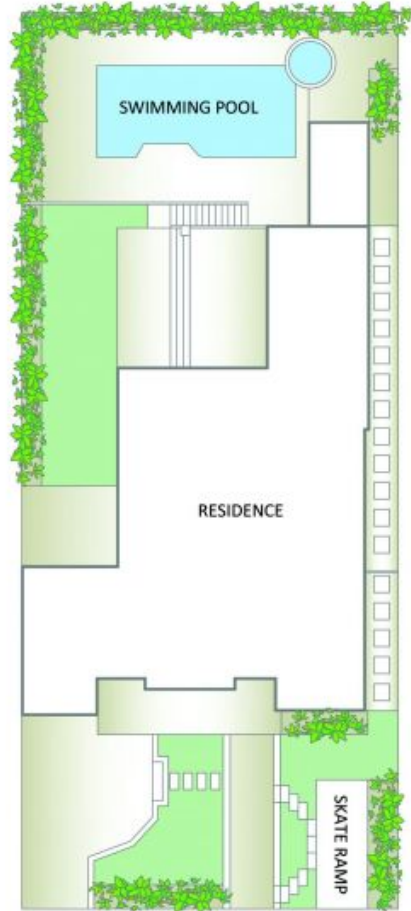
Jason Boon 0418 671 494

Geoff Cox 0418 231 004

Joss Reid 0414 662 391

Proudly Richardson & Wrench

Richardson & Wrench Elizabeth Bay / Potts Point
02 8356 2700



73 Hewlett Street, Bronte

*PLANS SHOWN ONLY INDICATIVE OF LAYOUT. DIMENSIONS ARE APPROXIMATE.

Measurements are approximate and not to scale. The vendor, agency and supplier will accept no liability for its accuracy. Interested parties are advised to make their own independent enquiries.

Every precaution has been taken to establish accuracy of the information in this brochure but does not constitute any representation by the vendor or agent.