



3/42a Bayswater Road Rushcutters Bay, NSW

1 bed | 1 bath

Tucked away to the peaceful rear of the charming 'Bayswater Mews' complex, this unique garden apartment offers a rare sense of privacy and tranquillity just moments from the vibrant heart of Potts Point. Hidden behind a secure gated entrance, the residence enjoys a prized north-easterly aspect with sunlight flooding the oversized courtyard and outdoor entertaining spaces throughout the day.

Designed for effortless indoor-outdoor living, the apar...

R&W

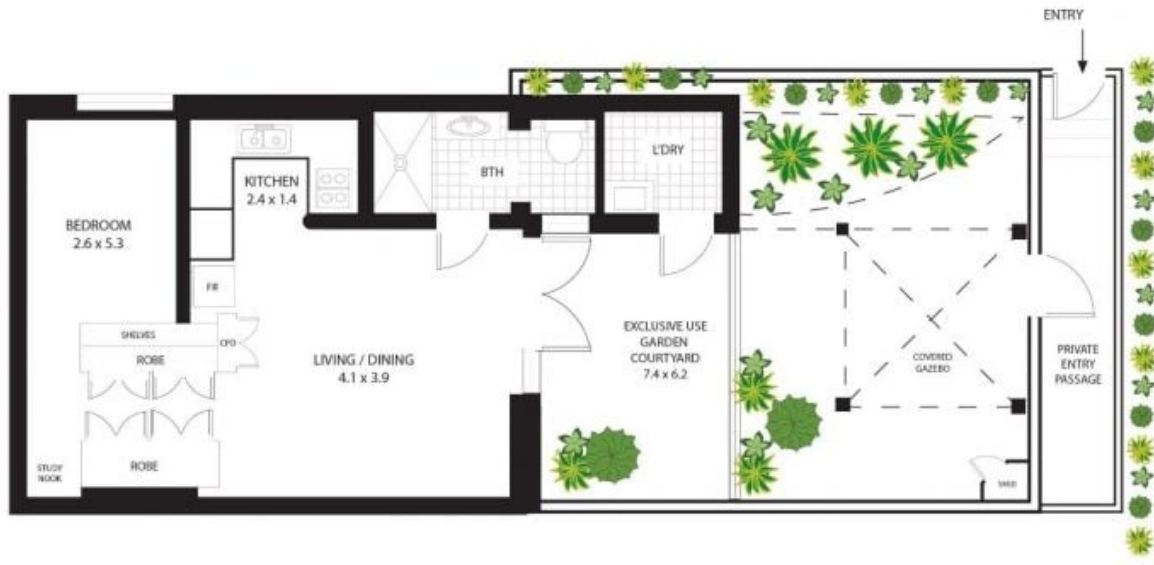
rwebay.com.au/8701189

Angelo Bouras 0401 658 653

Alex Mulholland 0410421182

Proudly Richardson&Wrench

Richardson & Wrench Elizabeth Bay / Potts Point
02 8356 2700



3/42A Bayswater Road, Rushcutters Bay

Whilst Ray White takes every care in the pursuit of accuracy, the plan is shown for general guidance only.
 All areas, measurements and distances are approximate and not to scale.
 Ray White and our vendor will accept no responsibility for its accuracy. Interested parties are advised to make their own enquiries.

