



## 416/88 Dowling Street Woolloomooloo, NSW

2 bed | 2 bath | 1 car

Positioned within the sought-after 'Woolloomooloo Waters' complex, this generously proportioned two-bedroom apartment offers an exceptional lifestyle in one of Sydney's premier harbourside precincts. Enjoy sweeping views across the city skyline, Harbour Bridge, Woolloomooloo Wharf and surrounding greenery.

The well-maintained kitchen features Westinghouse appli...

# R&W

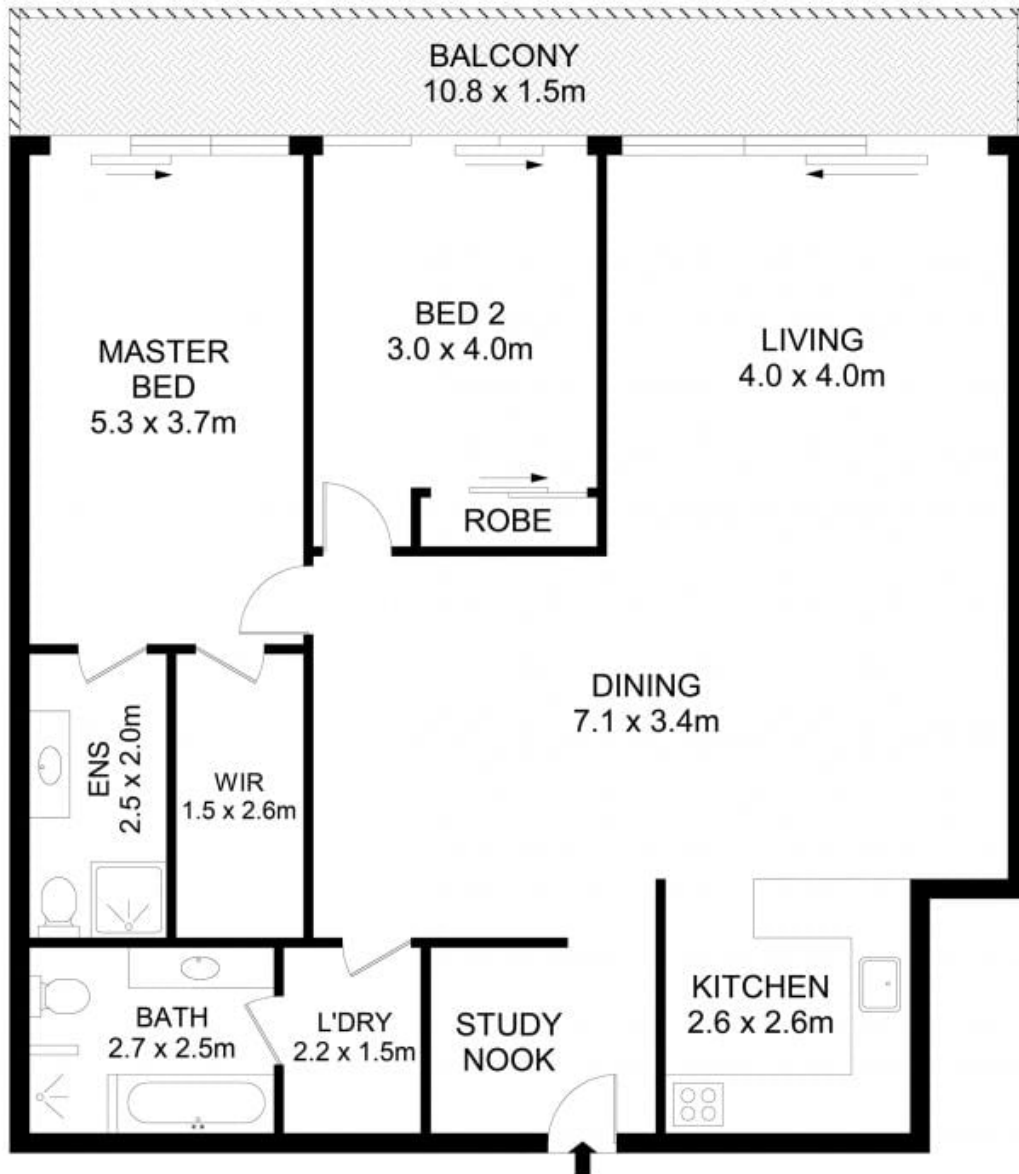
[rwebay.com.au/8701702](http://rwebay.com.au/8701702)

Angelo Bouras 0401 658 653

Alex Mulholland 0410421182

**Proudly Richardson&Wrench**

Richardson & Wrench Elizabeth Bay / Potts Point  
02 8356 2700



## 416/88 Dowling Street, Woolloomooloo

### Disclaimer

Floor Plan measurements are approximate and are for illustrative purposes only. While we cannot doubt the floor plans accuracy, we make no guarantee, warranty or representation as to the accuracy and completeness of the floor plan.