



## 22/3 Ward Avenue Potts Point, NSW

1 bed | 1 bath

Perfectly positioned between Fitzroy Gardens and the vibrant Roslyn Street caf? and dining precinct, this one-bedroom apartment delivers character, comfort and lifestyle convenience within the charming Art Deco building, The Roosevelt.

Set within a secure c1930s block with terrazzo foyer and well-maintained common areas, the apartment enjoys a quiet level two position. Freshly painted with brand new carpet in the bedroom, it presents a move-in ready opportunity with scope to further personalise over time.

...

# R&W

Open Saturday, 30th May 2026 11:30 - 12:00

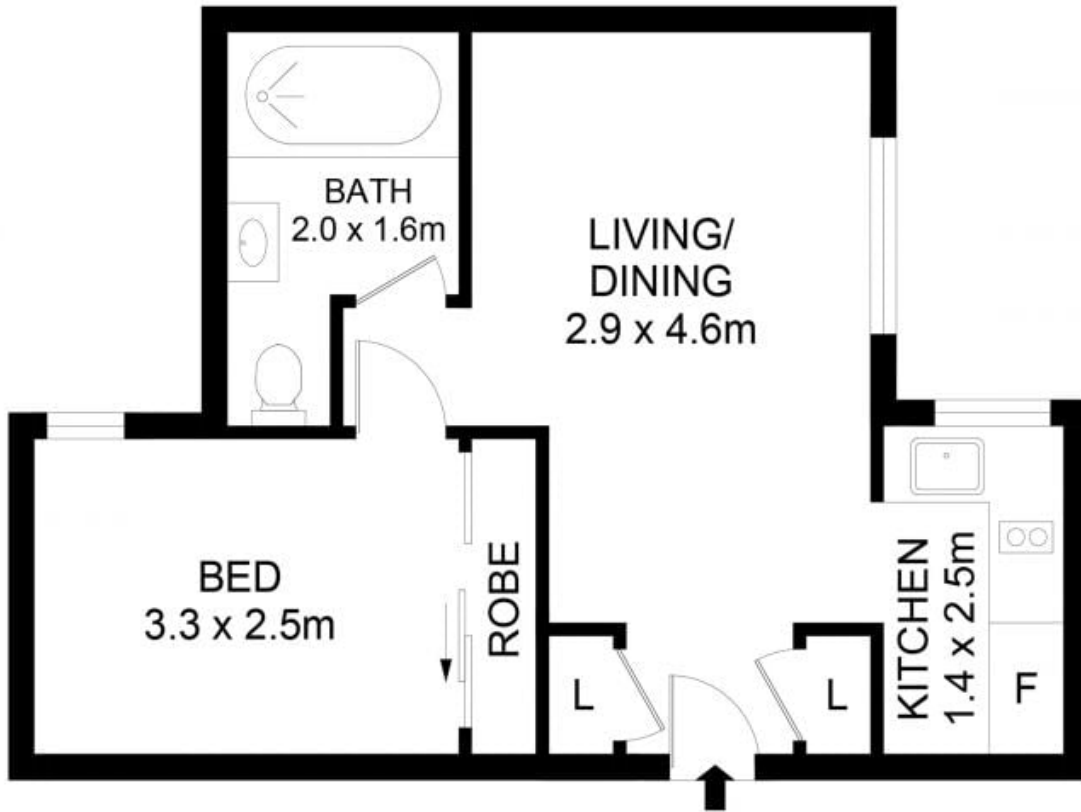
[rwebay.com.au/8708797](https://www.rwebay.com.au/8708797)

Angelo Bouras 0401 658 653

Alex Mulholland 0410421182

**Proudly Richardson&Wrench**

Richardson & Wrench Elizabeth Bay / Potts Point  
02 8356 2700



## 22/3 Ward Avenue, Potts Point

### Disclaimer

Floor Plan measurements are approximate and are for illustrative purposes only. While we cannot doubt the floor plans accuracy, we make no guarantee, warranty or representation as to the accuracy and completeness of the floor plan.