



## 10/123-125 Macleay Street Potts Point, NSW

2 bed | 1 bath

Positioned within the iconic 'Franconia' building, featuring a significant renovation, delivers approximately 105m<sup>2</sup> of sophisticated Art Deco living in the heart of Potts Point. Occupying a prized eastern position, the residence enjoys outlooks across Macleay Street, El Alamein Fountain and Fitzroy Gardens.

- [ ] Approx. 105sqm of internal living

Approx. Outgoings: ...

# R&W

**Auction Monday, 22nd June 5:30**

**R&W Offices, Shop 2/75 Macleay St, Potts Point**

Open Saturday, 30th May 2026 10:45 - 11:15

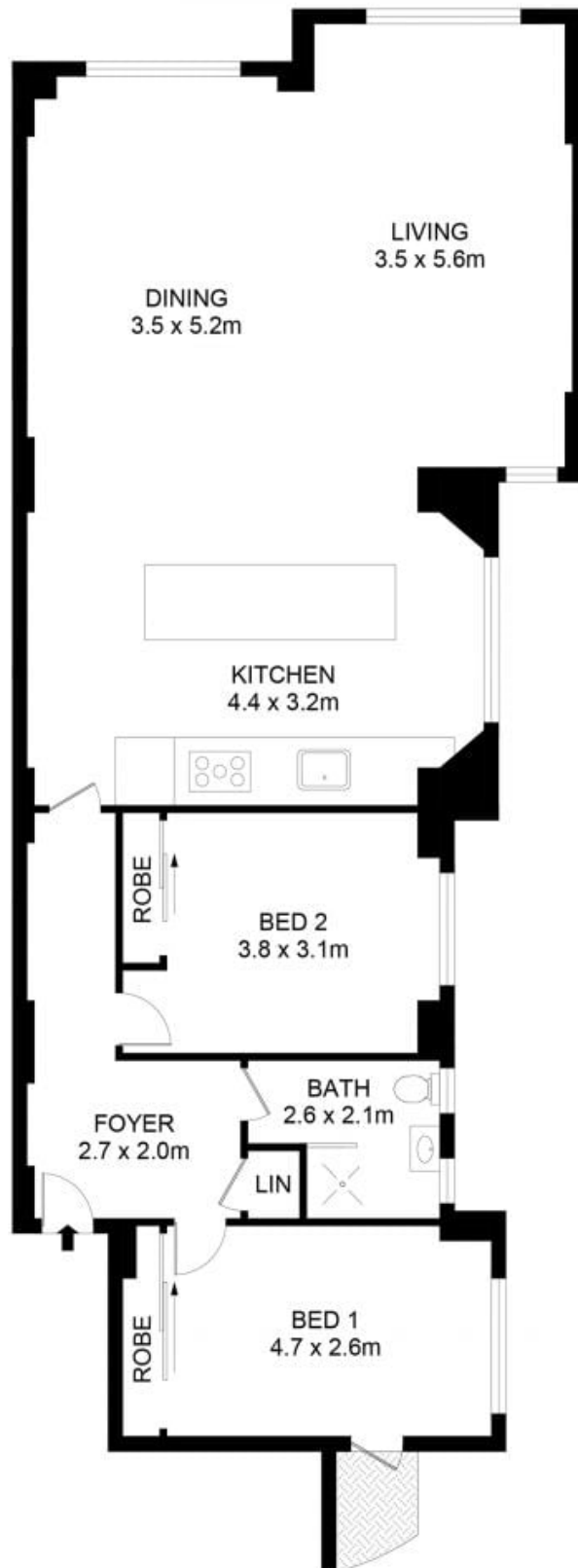
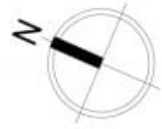
**[rwebay.com.au/8711170](http://rwebay.com.au/8711170)**

Angelo Bouras 0401 658 653

Greg McKinley 0412 044 822

**Proudly Richardson&Wrench**

Richardson & Wrench Elizabeth Bay / Potts Point  
02 8356 2700



## 10/123 Macleay Street, Potts Point



### Disclaimer

Floor Plan measurements are approximate and are for illustrative purposes only. While we cannot doubt the floor plans accuracy, we make no guarantee, warranty or representation as to the accuracy and completeness of the floor plan.

Every precaution has been taken to establish accuracy of the information in this brochure but does not constitute any representation by the vendor or agent.

**R&W**