



206/6A Birtley Place Elizabeth Bay, NSW

2 bed | 1 bath | 1 car

Tucked away at the end of a peaceful leafy cul-de-sac, this beautifully transformed apartment delivers a private sanctuary within the highly regarded 'Baroda Hall' security building. Occupying a prized north-east corner position, the residence is bathed in natural light and enjoys tranquil green leafy outlooks from almost every room.

Generous proportions and stylish modern interiors combi...

R&W

Auction Monday, 22nd June 5:30

R&W Offices, Shop 2/75 Macleay St, Potts Point

Open Saturday, 30th May 2026 9:15 - 9:45

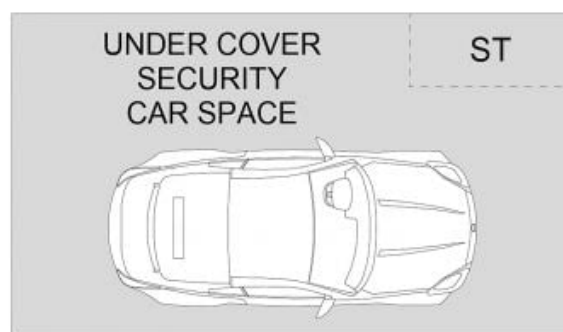
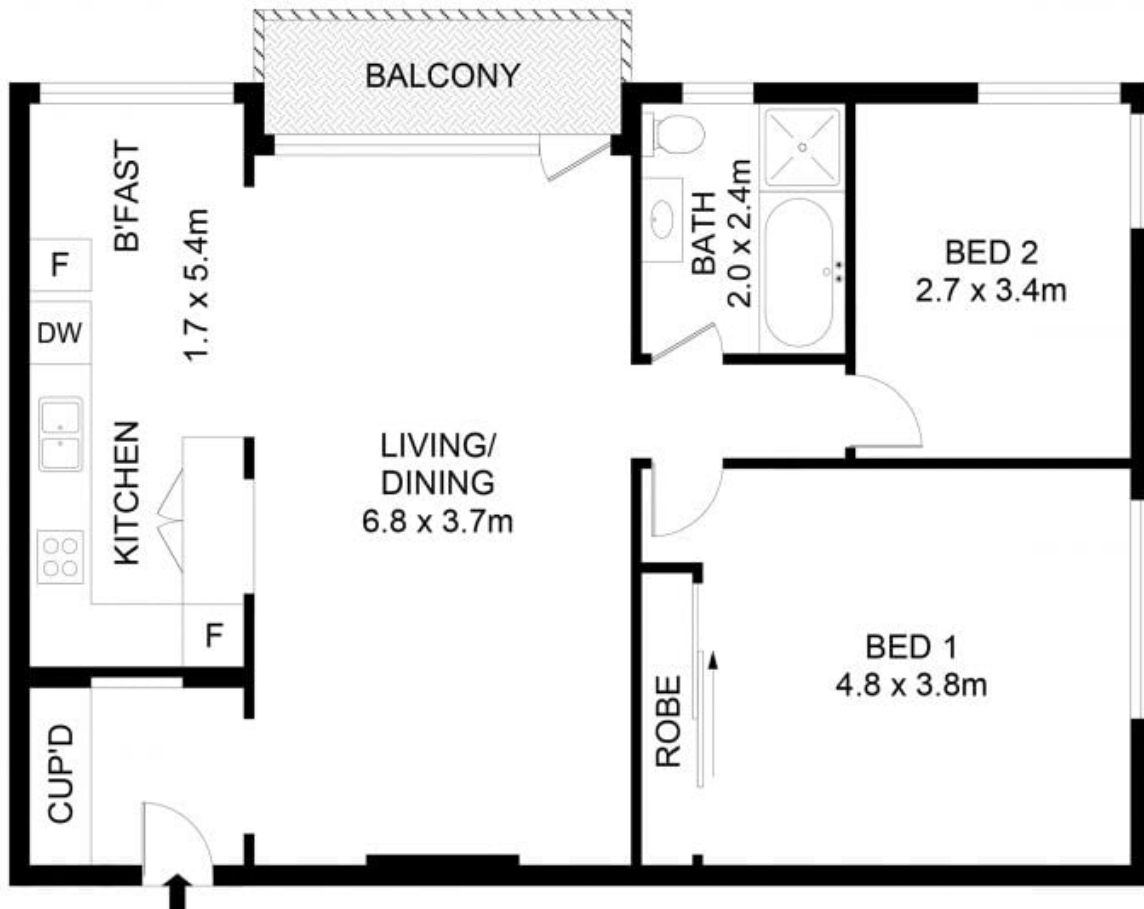
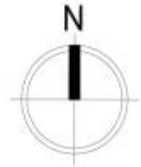
rwebay.com.au/8711735

Angelo Bouras 0401 658 653

Greg McKinley 0412 044 822

Proudly Richardson&Wrench

Richardson & Wrench Elizabeth Bay / Potts Point
02 8356 2700



206/6A Birtley Place, Elizabeth Bay



Disclaimer

Floor Plan measurements are approximate and are for illustrative purposes only. While we cannot doubt the floor plans accuracy, we make no guarantee, warranty or representation as to the accuracy and completeness of the floor plan.

Every precaution has been taken to establish accuracy of the information in this brochure but does not constitute any representation by the vendor or agent.

R&W