



36/41-49 Roslyn Gardens Elizabeth Bay, NSW

1 bed | 1 bath | 1 car

Positioned within the sought-after Bayview building, this stylish one-bedroom apartment combines updated interiors with tranquil district outlooks over a jacaranda-lined street and glimpses towards the boat masts of Rushcutters Bay.

Enjoying an elevated position filled with natural light, the apartment offers approximately 47sqm of living plus a secure car space on separate title - a rare inclusion in this premier harbourside location.

The open plan living and dining area flows to a balcony...

R&W

Auction Monday, 22nd June 5:30

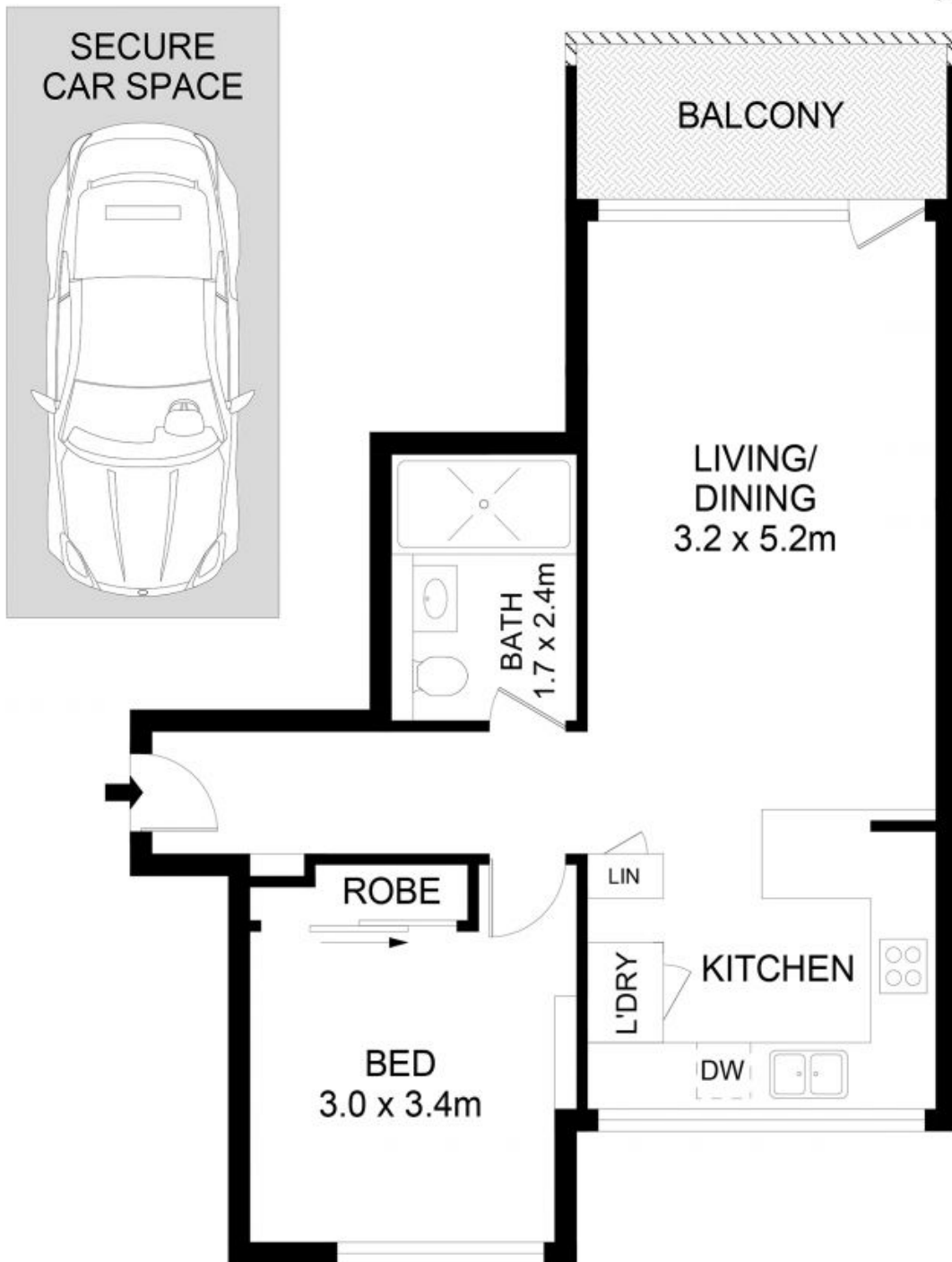
R&W Offices, Shop 2/75 Macleay St, Potts Point
rwebay.com.au/8712883

Angelo Bouras 0401 658 653

Greg McKinley 0412 044 822

Proudly Richardson&Wrench

Richardson & Wrench Elizabeth Bay / Potts Point
02 8356 2700



36/41-49 Roslyn Gardens, Elizabeth Bay

Disclaimer

Floor Plan measurements are approximate and are for illustrative purposes only. While we cannot doubt the floor plans accuracy, we make no guarantee, warranty or representation as to the accuracy and completeness of the floor plan.