



2/29 Billyard Avenue Elizabeth Bay, NSW

4 bed | 4 bath | 4 car

R&W

Heralding a new era of harbourside luxury, this breathtaking house-sized apartment combines world-class design with grand interior proportions to deliver a truly remarkable offering in one of Sydney's most exclusive waterfront enclaves. One of only 9 within the landmark 'Billyard Ave' project by acclaimed SJB architects, the home reinterprets the signature curves and elegance of Art Deco design through a contemporary lens, incorporating rare marble, exquisite timber, and premium finishes throughout.

Enjoying a prized N-facing aspect, the residence unfold...

rwebay.com.au/8714243

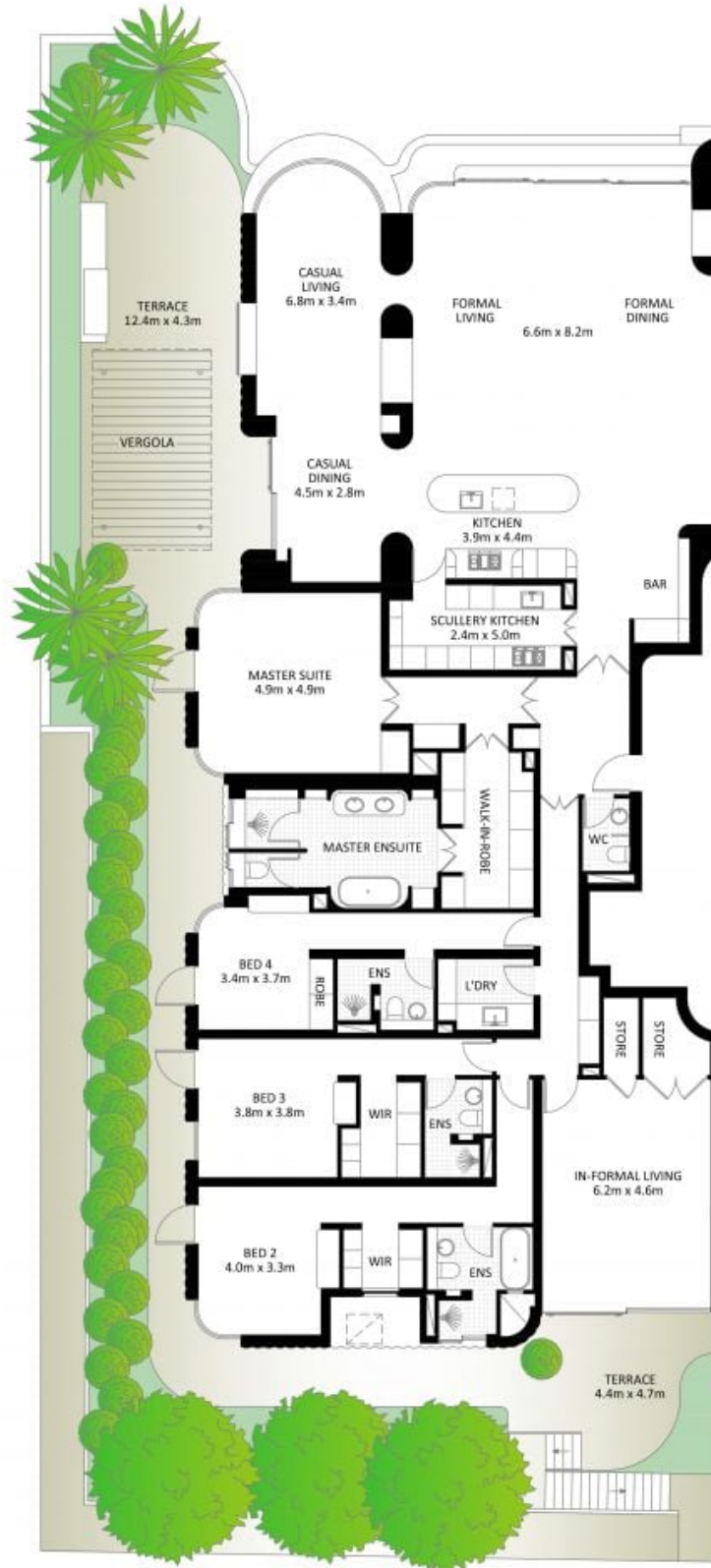
Jason Boon 0418 671 494

Andrew Hoggett 0412 208 614

Geoff Cox 0418 231 004

Proudly Richardson&Wrench

Richardson & Wrench Elizabeth Bay / Potts Point
02 8356 2700



2/29 Billyard Avenue, Elizabeth Bay

*PLANS SHOWN ONLY INDICATIVE OF LAYOUT. DIMENSIONS ARE APPROXIMATE.

Measurements are approximate and not to scale. The vendor, agency and supplier will accept no liability for its accuracy. Interested parties are advised to make their own independent enquiries.

Richardson&Wrench

RayWhite
PROJECTS

Every precaution has been taken to establish accuracy of the information in this brochure but does not constitute any representation by the vendor or agent.

R&W