



1110/227 Victoria Street Potts Point, NSW

1 bed | 1 bath | 1 car

Positioned high within the sought-after 'Top of Town' building, this impressive split-level residence captures breathtaking views across the Sydney CBD skyline, Harbour Bridge and Opera House. Set in the heart of Darlinghurst's vibrant Victoria Street village, the apartment delivers an exceptional combination of space, natural light and lifestyle convenience.

- Spectacular CBD skyline, Harbour Bridge and Opera House views

- Split-level design with excellent separation of space...

R&W

Auction Monday, 22nd June 5:30

R&W Offices, Shop 2/75 Macleay St, Potts Point

Open Saturday, 6th June 2026 1:00 - 1:30

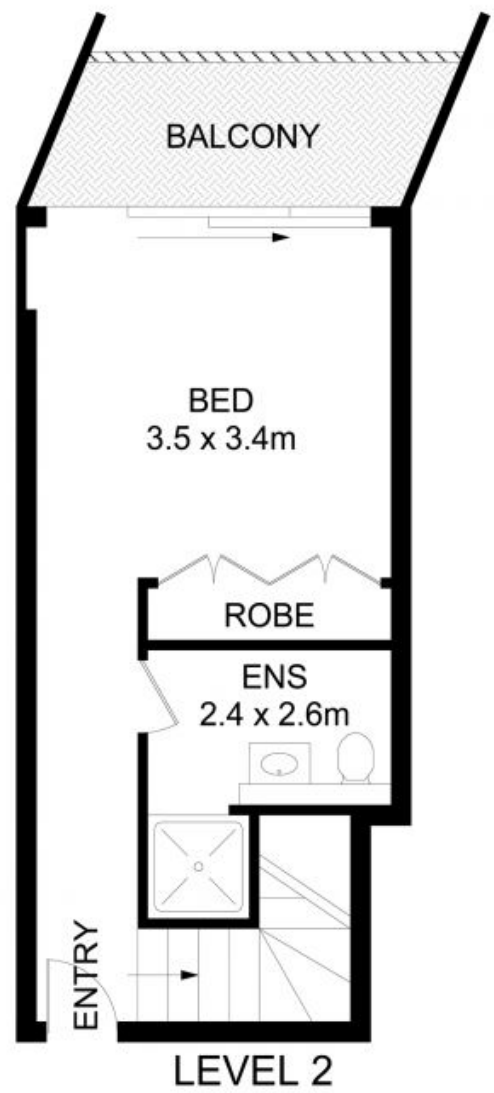
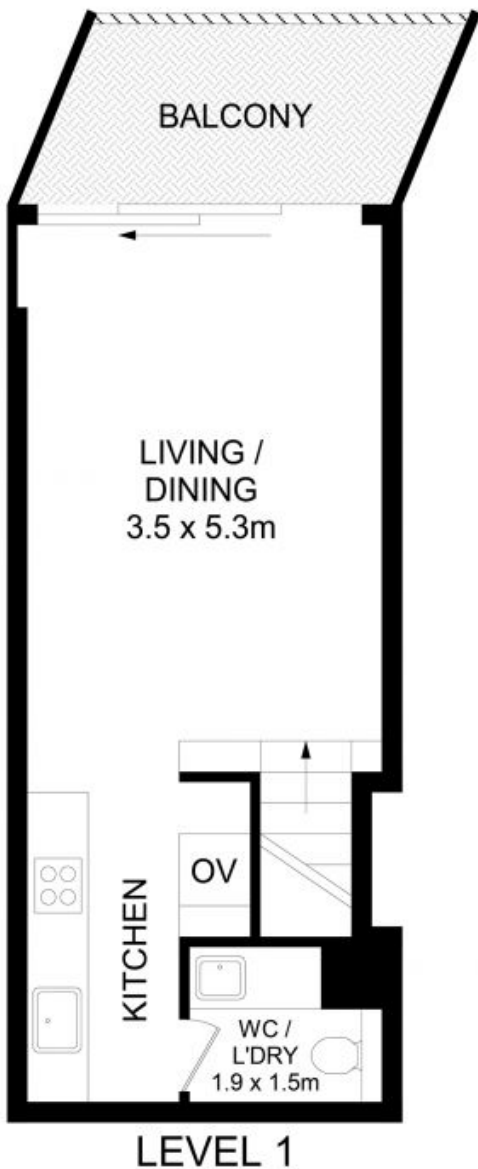
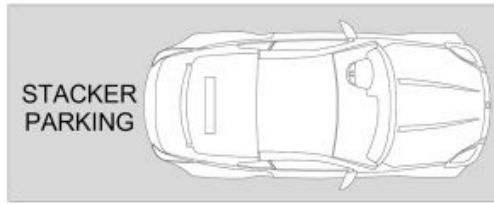
rwebay.com.au/8718821

Angelo Bouras 0401 658 653

Alex Mulholland 0410421182

Proudly Richardson&Wrench

Richardson & Wrench Elizabeth Bay / Potts Point
02 8356 2700



1110/227 Victoria Street, Darlinghurst

Disclaimer

Floor Plan measurements are approximate and are for illustrative purposes only. While we cannot doubt the floor plans accuracy, we make no guarantee, warranty or representation as to the accuracy and completeness of the floor plan.