



## 303/63 Crown Street Woolloomooloo, NSW

2 bed | 2 bath | 1 car

Bathed in abundant natural light, this north-facing two-bedroom, two-bathroom residence within the prestigious Crown Gardens offers a rare blend of luxury, privacy, and convenience. Showcasing sweeping views of St Mary's Cathedral and the glittering CBD skyline, this home delivers the ease of single-level apartment living with an impressive 121sqm of internal space, plus 15sqm secure parking and 2sqm storage.

Positioned on the desirable north-west corner, the apar...

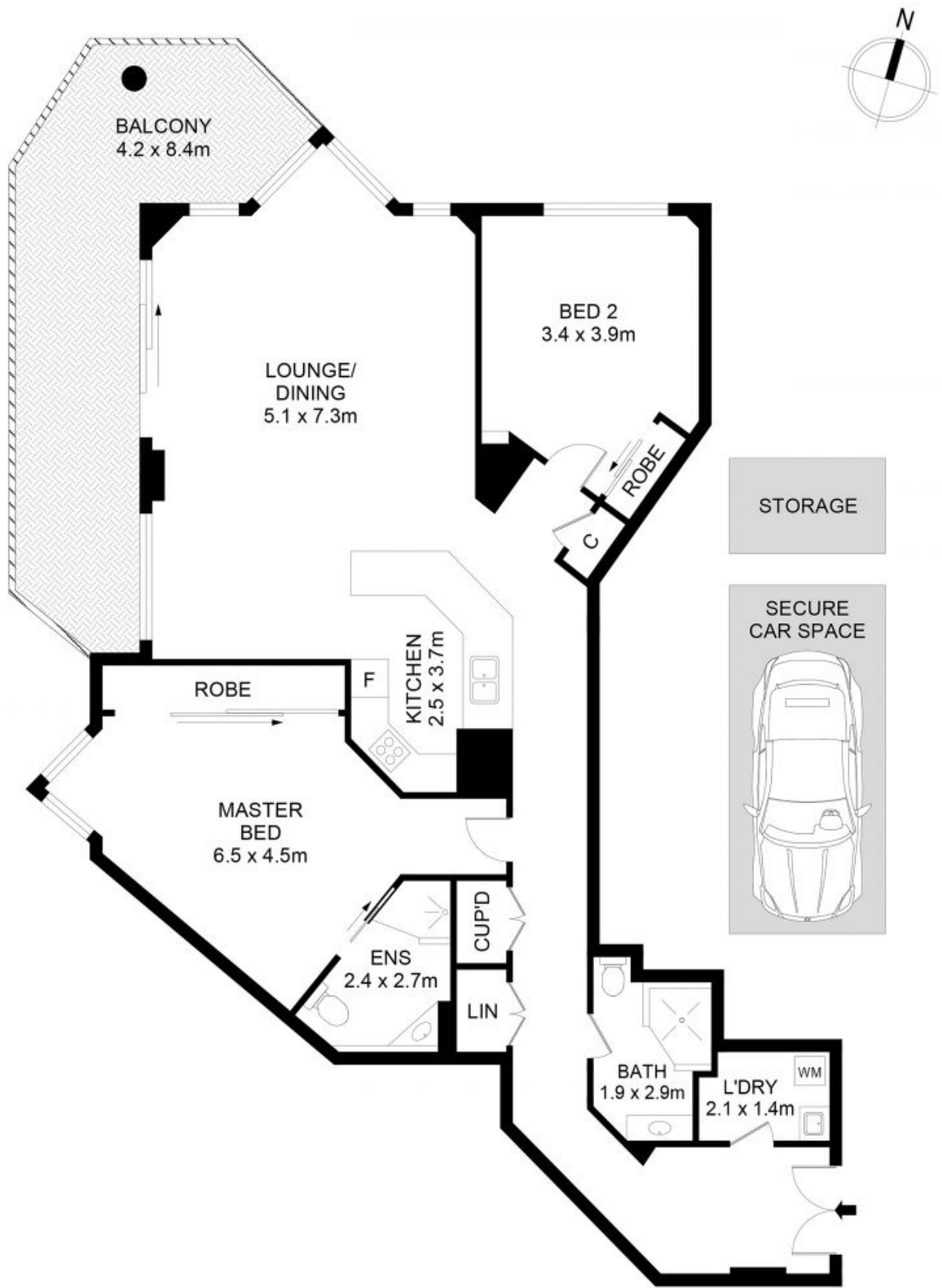
# R&W

[rwebay.com.au/8731700](http://rwebay.com.au/8731700)

Claudia Pope

**Proudly Richardson&Wrench**

Richardson & Wrench Elizabeth Bay / Potts Point  
02 8356 2700



## 303/63 Crown Street, Woolloomooloo

### Disclaimer

Floor Plan measurements are approximate and are for illustrative purposes only. While we cannot doubt the floor plans accuracy, we make no guarantee, warranty or representation as to the accuracy and completeness of the floor plan.