



135/19 Tusculum Street Potts Point, NSW

1 bed | 1 bath

Positioned on Level 3 of the iconic Kanimbla Hall, this renovated one-bedroom apartment combines classic Art Deco charm with modern convenience. Enjoy peace and privacy with high ceilings, windows on three sides, and excellent crossflow ventilation throughout.

Step inside to a welcoming entry hall that flows into a light-filled combined living and dining area, perfectly positioned to catch the breeze. The gorgeous separate kitchen and bathroom both offer leafy outlooks to the quiet, tree-lined Tusculum Street below.

...

R&W

Open Saturday, 27th June 2026 10:25 - 10:40

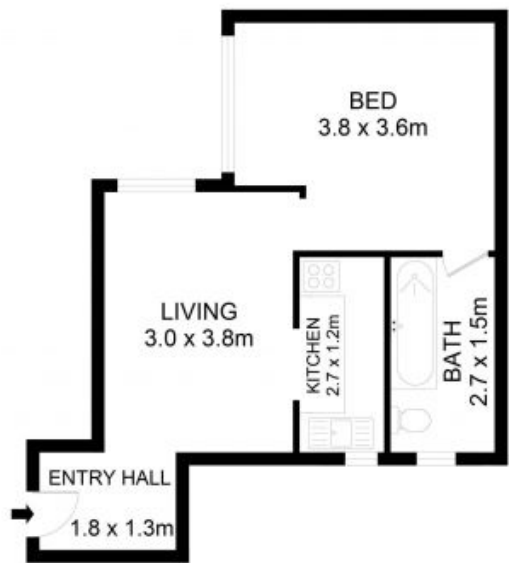
rwebay.com.au/8735571

Reeve Smith 0450919965

R&W Leasing 02 8356 2700

Proudly Richardson&Wrench

Richardson & Wrench Elizabeth Bay / Potts Point
02 8356 2700



135/19 Tusculum Street, Potts Point

Disclaimer:
Floor Plan measurements are approximate and are for illustrative purposes only. While we cannot doubt the floor plan accuracy, we make no guarantee, warranty or representation as to the accuracy and completeness of the floor plan.

Every precaution has been taken to establish accuracy of the information in this brochure but does not constitute any representation by the vendor or agent.

