



33/5-7 The Esplanade Elizabeth Bay, NSW

| 1 bath

Perfectly positioned along the iconic Esplanade in Elizabeth Bay, this beautifully furnished studio apartment offers an exceptional lifestyle opportunity in one of Sydney's most tightly held harbourside settings. Directly opposite Beare Park and the sparkling foreshore, the home enjoys a prized east-facing aspect, capturing abundant natural light and elevated glimpses across Elizabeth Bay.

R&W

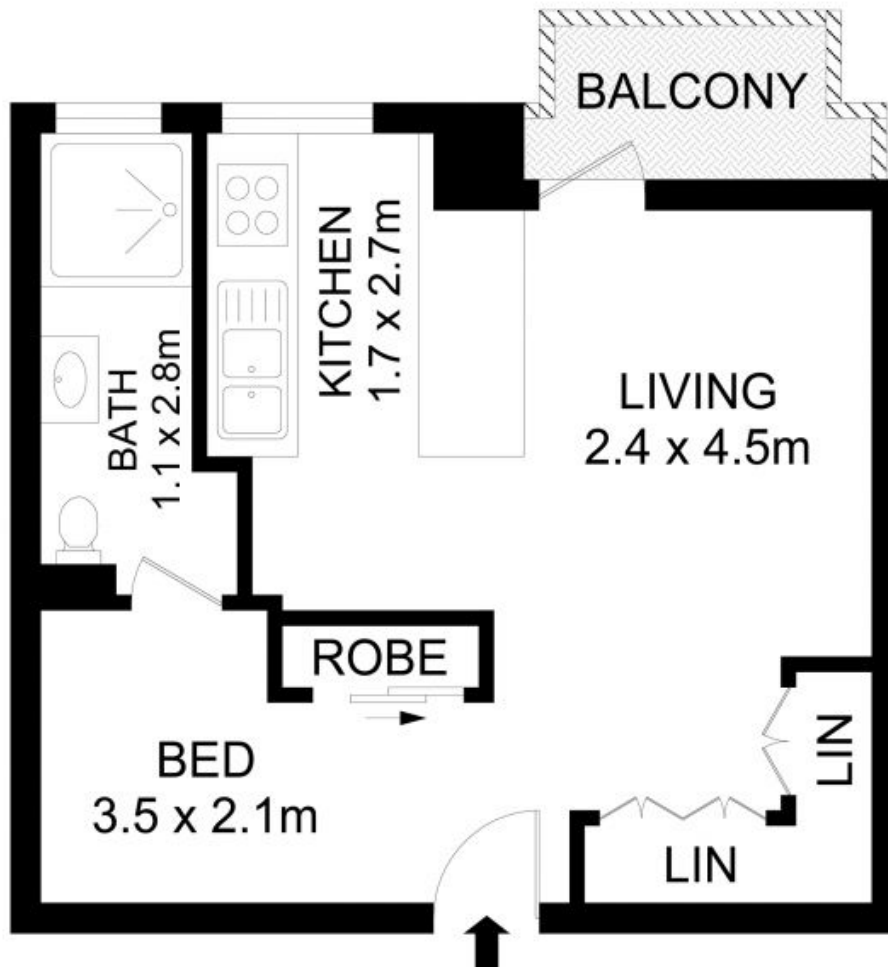
rwebay.com.au/8735873

Angelo Bouras 0401 658 653

Alex Mulholland 0410421182

Proudly Richardson&Wrench

Richardson & Wrench Elizabeth Bay / Potts Point
02 8356 2700



33/5-7 Esplanade, Elizabeth Bay

Disclaimer

Floor Plan measurements are approximate and are for illustrative purposes only. While we cannot doubt the floor plans accuracy, we make no guarantee, warranty or representation as to the accuracy and completeness of the floor plan.

Every precaution has been taken to establish accuracy of the information in this brochure but does not constitute any representation by the vendor or agent.

R&W